

Recombinant Human Cathepsin L2/CTSL2 Protein (His Tag)



Catalog Number:PKSH031883

Note: Centrifuge before opening to ensure complete recovery of vial contents.

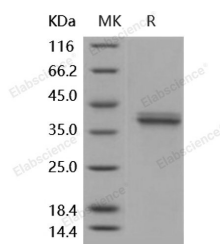
Description

Synonyms	Cathepsin L2;Cathepsin U;Cathepsin V;CTSL2;CATL2;CTSU;CTSV
Species	Human
Expression Host	HEK293 Cells
Sequence	Met 1-Val 334
Accession	NP_001324.2
Calculated Molecular Weight	37.1 kDa
Observed molecular weight	40 kDa
Tag	C-His
Bioactivity	Measured by its ability to cleave the fluorogenic peptide substrate Z-LR-AMC, (R&D Systems, Catalog # ES008). The specific activity is > 1000 pmoles/min/ μ g.

Properties

Purity	> 95 % as determined by reducing SDS-PAGE.
Endotoxin	< 1.0 EU per μ g of the protein as determined by the LAL method.
Storage	Generally, lyophilized proteins are stable for up to 12 months when stored at -20 to -80°C. Reconstituted protein solution can be stored at 4-8°C for 2-7 days. Aliquots of reconstituted samples are stable at < -20°C for 3 months.
Shipping	This product is provided as lyophilized powder which is shipped with ice packs.
Formulation	Lyophilized from sterile PBS, pH 7.4 Normally 5 % - 8 % trehalose, mannitol and 0.01% Tween80 are added as protectants before lyophilization. Please refer to the specific buffer information in the printed manual.
Reconstitution	Please refer to the printed manual for detailed information.

Data



> 95 % as determined by reducing SDS-PAGE.

Background

Cathepsin V (CTSV), also known as Cathepsin L2, CTSL2, and CATL2, is a member of the peptidase C1 family. It is predominantly expressed in the thymus and testis. Cathepsin V is also expressed in corneal epithelium, and to a lesser extent in conjunctival epithelium and skin. It is a lysosomal cysteine proteinase that may play an important role in corneal physiology. It has about 75% protein sequence identity to murine cathepsin L. The fold of this enzyme is similar to the fold adopted by other members of the papain superfamily of cysteine proteases. Cathepsin V has been recently described as highly homologous to Cathepsin L and exclusively expressed in human thymus and testis. Cathepsin V is the dominant

For Research Use Only

A Reliable Research Partner in Life Science and Medicine

Toll-free: 1-888-852-8623

Web: www.elabscience.com

Tel: 1-832-243-6086

Email: techsupport@elabscience.com

Fax: 1-832-243-6017

Recombinant Human Cathepsin L2/CTSL2 Protein (His Tag)



Catalog Number:PKSH031883

cysteine protease in cortical human thymic epithelial cells, while Cathepsin L and Cathepsin S seem to be restricted to dendritic and macrophage-like cells. Active Cathepsin V in thymic lysosomal preparations was demonstrated by active-site labeling. Recombinant Cathepsin V was capable of converting Ii into CLIP efficiently, suggesting that it is the protease that controls the generation of alphabeta-CLIP complexes in the human thymus. Cathepsin V is the third elastolytic cysteine protease which exhibits the most potent elastase activity yet described among human proteases and that it is present in atherosclerotic plaque specimens. Cathepsin L2 may play a specialized role in the thymus and testis. Expression analysis of cathepsin L2 in human tumors revealed a widespread expression in colorectal and breast carcinomas but not in normal colon or mammary gland or in peritumoral tissues.

For Research Use Only

A Reliable Research Partner in Life Science and Medicine

Toll-free: 1-888-852-8623

Tel: 1-832-243-6086

Fax: 1-832-243-6017

Web: www.elabscience.com

Email: techsupport@elabscience.com