

Recombinant Human ALK-1/ACVRL1 Protein (His Tag)

Catalog No. PKSH031898

Note: Centrifuge before opening to ensure complete recovery of vial contents.

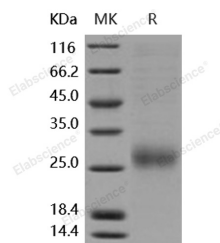
Description

Synonyms	Serine/Threonine-Protein Kinase Receptor R3;SKR3;Activin Receptor-Like Kinase 1;ALK-1;TGF-B Superfamily Receptor Type I;TSR-I;ACVRL1;ACVRLK1;ALK1;HHT;HHT2;ORW2;SKR3
Species	Human
Expression Host	HEK293 Cells
Sequence	Met 1-Gln 118
Accession	NP_000011.2
Calculated Molecular Weight	12.3 kDa
Observed molecular weight	27 kDa
Tag	C-His
Bioactivity	Measured by its ability to inhibit BMP9 induced alkaline phosphatase production by MC3T3E1 mouse chondrogenic cells. David, L. et al. (2007) Blood 109:1953. The ED50 for this effect is typically 50-200 ng/mL in the presence of 2 ng/mL of recombinant human BMP9.

Properties

Purity	> 92 % as determined by reducing SDS-PAGE.
Endotoxin	< 1.0 EU per µg of the protein as determined by the LAL method.
Storage	Generally, lyophilized proteins are stable for up to 12 months when stored at -20 to -80°C. Reconstituted protein solution can be stored at 4-8°C for 2-7 days. Aliquots of reconstituted samples are stable at < -20°C for 3 months.
Shipping	This product is provided as lyophilized powder which is shipped with ice packs.
Formulation	Lyophilized from sterile PBS, pH 7.4 Normally 5 % - 8 % trehalose, mannitol and 0.01% Tween80 are added as protectants before lyophilization. Please refer to the specific buffer information in the printed manual.
Reconstitution	Please refer to the printed manual for detailed information.

Data



> 92 % as determined by reducing SDS-PAGE.

For Research Use Only

Background

Activin A receptor, type II-like 1 (ACVRL1), also known as ALK-1 (activin receptor-like kinase 1), is an endothelial-specific type I receptor of the TGF-beta (transforming growth factor beta) receptor family of ligands. On ligand binding, a heteromeric receptor complex forms consisting of two type II and two type I transmembrane serine/threonine kinases. ACVRL1 protein is expressed in certain blood vessels of kidney, spleen, heart and intestine, serving as an important role during vascular development. Mutations in ACVRL1 gene are associated with hemorrhagic telangiectasia type 2, also known as Rendu-Osler-Weber syndrome 2 and vascular disease.

For Research Use Only