

Recombinant Rat Cathepsin E/CTSE Protein (His Tag)

Catalog No. PKSR030138

Note: Centrifuge before opening to ensure complete recovery of vial contents.

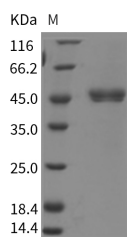
Description

Synonyms	Cathepsin E;CTSE
Species	Rat
Expression Host	HEK293 Cells
Sequence	Met1-Pro398
Accession	AAH62002.1
Calculated Molecular Weight	42.1 kDa
Tag	C-His
Bioactivity	Not validated for activity

Properties

Purity	> 90 % as determined by reducing SDS-PAGE.
Endotoxin	< 1.0 EU per µg of the protein as determined by the LAL method.
Storage	Generally, lyophilized proteins are stable for up to 12 months when stored at -20 to -80°C. Reconstituted protein solution can be stored at 4-8°C for 2-7 days. Aliquots of reconstituted samples are stable at < -20°C for 3 months.
Shipping	This product is provided as lyophilized powder which is shipped with ice packs.
Formulation	Lyophilized from sterile 12.5 mM MES, 75 mM NaCl, 50 % glycerol, pH 6.5 Normally 5 % - 8 % trehalose, mannitol and 0.01 % Tween80 are added as protectants before lyophilization. Please refer to the specific buffer information in the printed manual.
Reconstitution	Please refer to the printed manual for detailed information.

Data



> 90 % as determined by reducing SDS-PAGE.

Background

Cathepsin E Protein (CTSE Protein) is a member of the peptidase C1 family that is a gastric aspartic protease that functions as a disulfide-linked homodimer. Cathepsin E Protein (CTSE Protein) is predominantly present in the cells of immune system and is frequently implicated in antigen processing via the MHC classII pathway which however does not

For Research Use Only

appear to be involved in the digestion of dietary protein. The protein has a specificity similar to that of pepsin and pepsin. Cathepsin E Protein (CTSE Protein) is found in highest concentration in the surface of epithelial mucus-producing cells of the stomach and also been found in more than half of the gastric cancers. It appears, therefore, to be an oncofetal antigen.