

## Recombinant Rat Cadherin-17/CDH17 Protein (His Tag)

Catalog No. PKSR030262

**Note:** Centrifuge before opening to ensure complete recovery of vial contents.

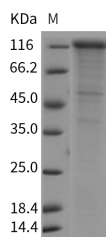
### Description

<b>Synonyms</b>	CDH17
<b>Species</b>	Rat
<b>Expression Host</b>	HEK293 Cells
<b>Sequence</b>	Met1-Met786
<b>Accession</b>	P55281
<b>Calculated Molecular Weight</b>	86.4 kDa
<b>Observed molecular weight</b>	118 kDa
<b>Tag</b>	C-His
<b>Bioactivity</b>	Not validated for activity

### Properties

<b>Purity</b>	> 81 % as determined by reducing SDS-PAGE.
<b>Endotoxin</b>	< 1.0 EU per µg of the protein as determined by the LAL method.
<b>Storage</b>	Generally, lyophilized proteins are stable for up to 12 months when stored at -20 to -80°C. Reconstituted protein solution can be stored at 4-8°C for 2-7 days. Aliquots of reconstituted samples are stable at < -20°C for 3 months.
<b>Shipping</b>	This product is provided as lyophilized powder which is shipped with ice packs.
<b>Formulation</b>	Lyophilized from sterile PBS, pH 7.4 Normally 5 % - 8 % trehalose, mannitol and 0.01% Tween80 are added as protectants before lyophilization. Please refer to the specific buffer information in the printed manual.
<b>Reconstitution</b>	Please refer to the printed manual for detailed information.

### Data



> 81 % as determined by reducing SDS-PAGE.

### Background

Cadherin-17 or LI-cadherin is a member of the cadherin superfamily, genes encoding calcium-dependent, membrane-associated glycoproteins. Cadherin-17/LI-cadherin is a cadherin-like protein consisting of an extracellular region, 7

### For Research Use Only

cadherin domains, and a transmembrane region but lacking the conserved cytoplasmic domain. The protein is a component of the gastrointestinal tract and pancreatic ducts, acting as an intestinal proton-dependent peptide transporter in the first step in oral absorption of many medically important peptide-based drugs. The protein may also play a role in the morphological organization of liver and intestine. Alternative splicing of the encoding gene results in multiple transcript variants. Cadherin-17/LI-cadherin preferentially interact with themselves in a homophilic manner in connecting cells. Cadherin-17 may thus contribute to the sorting of heterogeneous cell types and have a role in the morphological organization of liver and intestine. It's also involved in intestinal peptide transport. Experiments have reported the association between Cadherin-17/LI-cadherin and gastric cancer. Cadherin-17/LI-cadherin expression was detected in 63/94 of gastric adenocarcinomas in addition to intestinal metaplasia. The expression of Cadherin-17 tended to be associated with intestinal type carcinoma, and carcinomas with Cadherin-17 expression was significantly more frequent in advanced stage cases than in early stage. Cadherin-17 is also a useful immunohistochemical marker for diagnosis of adenocarcinomas of the digestive system.