

# Recombinant Rat REG3A/HIP Protein (Fc Tag)

Catalog Number:PKSR030285



**Note:** Centrifuge before opening to ensure complete recovery of vial contents.

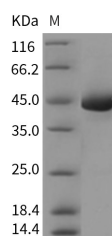
## Description

<b>Synonyms</b>	REG3A;Pap2;Reg3
<b>Species</b>	Rat
<b>Expression Host</b>	HEK293 Cells
<b>Sequence</b>	Met1-Gln174
<b>Accession</b>	BAA04904.1
<b>Calculated Molecular Weight</b>	43.4 kDa
<b>Observed molecular weight</b>	44 kDa
<b>Tag</b>	C-hFc

## Properties

<b>Purity</b>	> 95 % as determined by reducing SDS-PAGE.
<b>Endotoxin</b>	< 1.0 EU per µg of the protein as determined by the LAL method.
<b>Storage</b>	Generally, lyophilized proteins are stable for up to 12 months when stored at -20 to -80°C. Reconstituted protein solution can be stored at 4-8°C for 2-7 days. Aliquots of reconstituted samples are stable at < -20°C for 3 months.
<b>Shipping</b>	This product is provided as lyophilized powder which is shipped with ice packs.
<b>Formulation</b>	Lyophilized from sterile PBS, pH 7.4 Normally 5 % - 8 % trehalose, mannitol and 0.01 % Tween80 are added as protectants before lyophilization. Please refer to the specific buffer information in the printed manual.
<b>Reconstitution</b>	Please refer to the printed manual for detailed information.

## Data



> 95 % as determined by reducing SDS-PAGE.

## Background

Regenerating islet-derived protein 3-alpha, also known as Regenerating islet-derived protein III-alpha, REG-3-alpha, REG3A, and HIP, is secreted protein which contains one C-type lectin domain. REG3A is constitutively expressed in intestine, and is a pancreatic secretory protein that may be involved in cell proliferation or differentiation. It is overexpressed during the acute phase of pancreatitis and in some patients with chronic pancreatitis. REG3A and REG1A proteins are both involved in liver and pancreatic regeneration and proliferation. REG3A is also a stress protein involved in the control of bacterial proliferation. REG3A is down-regulated in most primary human gastric cancer cells, and might be useful in the diagnosis of gastric cancer. Additionally, REG3A is a target of beta-catenin signaling in Huh7 hepatoma cells. The REG1A and REG3A are downstream targets of the Wnt pathway during liver tumorigenesis.

## For Research Use Only

A Reliable Research Partner in Life Science and Medicine

Toll-free: 1-888-852-8623

Web: [www.elabscience.com](http://www.elabscience.com)

Tel: 1-832-243-6086

Email: [techsupport@elabscience.com](mailto:techsupport@elabscience.com)

Fax: 1-832-243-6017