

# Recombinant Rat HepaCAM2 Protein (His Tag)

Catalog Number:PKSR030294



**Note:** Centrifuge before opening to ensure complete recovery of vial contents.

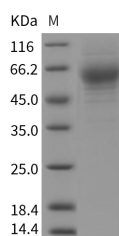
## Description

<b>Synonyms</b>	HepaCAM2
<b>Species</b>	Rat
<b>Expression Host</b>	HEK293 Cells
<b>Sequence</b>	Met1-Leu350
<b>Accession</b>	B5DEN8
<b>Calculated Molecular Weight</b>	36.7 kDa
<b>Observed molecular weight</b>	60 kDa
<b>Tag</b>	C-His

## Properties

<b>Purity</b>	> 95 % as determined by reducing SDS-PAGE.
<b>Endotoxin</b>	< 1.0 EU per µg of the protein as determined by the LAL method.
<b>Storage</b>	Generally, lyophilized proteins are stable for up to 12 months when stored at -20 to -80°C. Reconstituted protein solution can be stored at 4-8°C for 2-7 days. Aliquots of reconstituted samples are stable at < -20°C for 3 months.
<b>Shipping</b>	This product is provided as lyophilized powder which is shipped with ice packs.
<b>Formulation</b>	Lyophilized from sterile PBS, pH 7.4 Normally 5 % - 8 % trehalose, mannitol and 0.01 % Tween80 are added as protectants before lyophilization. Please refer to the specific buffer information in the printed manual.
<b>Reconstitution</b>	Please refer to the printed manual for detailed information.

## Data



> 95 % as determined by reducing SDS-PAGE.

## Background

HepaCAM2 belongs to the immunoglobulin family. HepaCAM2, together with HEPACAM1, are cell adhesion molecules. HEPACAM1 modulates cell adhesion and migration. It also inhibits cancer cell growth. HepaCAM2 contains 2 Ig-like C2-type (immunoglobulin-like) domains. The immunoglobulin domain is a type of protein domain that consists of a 2-layer sandwich of between 7 and 9 antiparallel  $\beta$ -strands arranged in two  $\beta$ -sheets with a Greek key topology. Members of the immunoglobulin superfamily are found in hundreds of proteins of different functions.

## For Research Use Only

A Reliable Research Partner in Life Science and Medicine

Toll-free: 1-888-852-8623

Web: [www.elabscience.com](http://www.elabscience.com)

Tel: 1-832-243-6086

Email: [techsupport@elabscience.com](mailto:techsupport@elabscience.com)

Fax: 1-832-243-6017