

Recombinant Rat CLEC4F/CLECSF13 Protein

Catalog Number:PKSR030313



Note: Centrifuge before opening to ensure complete recovery of vial contents.

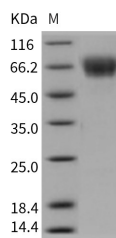
Description

Synonyms	CLEC4F;Clecsf13;Kclr
Species	Rat
Expression Host	HEK293 Cells
Sequence	Arg70-Ser550
Accession	NP_446205.1
Calculated Molecular Weight	53.7 kDa
Observed molecular weight	63-68 kDa
Tag	None

Properties

Purity	> 95 % as determined by reducing SDS-PAGE.
Endotoxin	< 1.0 EU per µg of the protein as determined by the LAL method.
Storage	Generally, lyophilized proteins are stable for up to 12 months when stored at -20 to -80°C. Reconstituted protein solution can be stored at 4-8°C for 2-7 days. Aliquots of reconstituted samples are stable at < -20°C for 3 months.
Shipping	This product is provided as lyophilized powder which is shipped with ice packs.
Formulation	Lyophilized from sterile PBS, pH 7.4 Normally 5 % - 8 % trehalose, mannitol and 0.01 % Tween80 are added as protectants before lyophilization. Please refer to the specific buffer information in the printed manual.
Reconstitution	Please refer to the printed manual for detailed information.

Data



> 95 % as determined by reducing SDS-PAGE.

Background

CLEC4F, a member of C-type lectins, was firstly purified from rat liver extract with high binding affinity to fucose, galactose and N-acetylgalactosamine, and un-sialylated glucosphingolipids with GalNAc or Gal terminus. However, the biological functions of CLEC4F have not been elucidated. Histochemical staining showed that mouse CLEC4F⁺mCLEC4F⁺ is only expressed on F4/80+ cells localized in liver, and is undetectable in bone marrow, spleen, lymph nodes, or other tissues in adult mice. However, mCLEC4F is detected in the liver of embryonic day 11.5 (E11.5), which is 1.5 day earlier than the formation of liver (E10) and is 3.5 day earlier than the formation of bone marrow (E15-16). Moreover, recombinant mCLEC4F.Fc binds to alpha-galactoceramide in a Ca⁺⁺-dependent manner, and both galactose and ceramide can partially inhibit CLEC4F.Fc binding to alpha-galactoceramide. Interestingly, mCLEC4F-

For Research Use Only

A Reliable Research Partner in Life Science and Medicine

Toll-free: 1-888-852-8623

Web: www.elabscience.com

Tel: 1-832-243-6086

Email: techsupport@elabscience.com

Fax: 1-832-243-6017

Recombinant Rat CLEC4F/CLECSF13 Protein

Catalog Number:PKSR030313



deficient (mCEC4F k/o) mice produced far less cytokines than wild type littermates after intravenous injection of alpha-galactoceramide. This suggests that mCLEC4F is not only a specific marker for Kupffer cells, but is also critical for the presentation of glycolipid antigen to NKT cells.

For Research Use Only

A Reliable Research Partner in Life Science and Medicine

Toll-free: 1-888-852-8623

Tel: 1-832-243-6086

Fax: 1-832-243-6017

Web: www.elabscience.com

Email: techsupport@elabscience.com