

# Recombinant Rat CLEC4D/CLECSF8 Protein (His Tag)

Catalog Number:PKSR030314



**Note:** Centrifuge before opening to ensure complete recovery of vial contents.

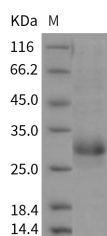
## Description

<b>Synonyms</b>	CLEC4D;Clecsf8;Mcl
<b>Species</b>	Rat
<b>Expression Host</b>	HEK293 Cells
<b>Sequence</b>	Trp48-Lys218
<b>Accession</b>	Q69FH1
<b>Calculated Molecular Weight</b>	22.3 kDa
<b>Observed molecular weight</b>	29 kDa
<b>Tag</b>	N-His

## Properties

<b>Purity</b>	> 88 % as determined by reducing SDS-PAGE.
<b>Endotoxin</b>	< 1.0 EU per µg of the protein as determined by the LAL method.
<b>Storage</b>	Generally, lyophilized proteins are stable for up to 12 months when stored at -20 to -80°C. Reconstituted protein solution can be stored at 4-8°C for 2-7 days. Aliquots of reconstituted samples are stable at < -20°C for 3 months.
<b>Shipping</b>	This product is provided as lyophilized powder which is shipped with ice packs.
<b>Formulation</b>	Lyophilized from sterile PBS, pH 7.4 Normally 5 % - 8 % trehalose, mannitol and 0.01 % Tween80 are added as protectants before lyophilization. Please refer to the specific buffer information in the printed manual.
<b>Reconstitution</b>	Please refer to the printed manual for detailed information.

## Data



> 88 % as determined by reducing SDS-PAGE.

## Background

C-type lectin (CLEC) family is a type of carbohydrate-binding protein domain named lectin. C-type lectins are the most diverse and prevalent lectin family in immunity with its requirement for calcium for binding. Proteins including a C-type lectin domain have diverse range of functions including cell-cell adhesion, immune response to pathogens and apoptosis. There are at least 14 types of C-type lectins: typeI to typeXIV. CLEC4D(CLECSF8) is a typeII membrane glycoprotein belonging to the C-type lectin family, with restricted expression in the monocyte/macrophage lineage. It plays important roles in the function of macrophages.

## For Research Use Only

A Reliable Research Partner in Life Science and Medicine

Toll-free: 1-888-852-8623

Web: [www.elabscience.com](http://www.elabscience.com)

Tel: 1-832-243-6086

Email: [techsupport@elabscience.com](mailto:techsupport@elabscience.com)

Fax: 1-832-243-6017