

# Recombinant Rat EphA7/EHK3 Protein (His Tag)

Catalog Number:PKSR030360



**Note:** Centrifuge before opening to ensure complete recovery of vial contents.

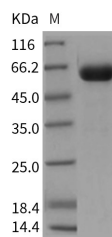
## Description

<b>Synonyms</b>	EPHA7;Ehk-3;Ehk3
<b>Species</b>	Rat
<b>Expression Host</b>	HEK293 Cells
<b>Sequence</b>	Met1-Ser539
<b>Accession</b>	P54759
<b>Calculated Molecular Weight</b>	58.9 kDa
<b>Observed molecular weight</b>	59 kDa
<b>Tag</b>	C-His
<b>Bioactivity</b>	Immobilized rat EPHA7-His at 10 µg/ml (100 µl/well) can bind mouse EFNA4-Fc, The EC50 of mouse EFNA4-Fc is 10.0-23.4 ng/ml.

## Properties

<b>Purity</b>	> 95 % as determined by reducing SDS-PAGE.
<b>Endotoxin</b>	< 1.0 EU per µg of the protein as determined by the LAL method.
<b>Storage</b>	Generally, lyophilized proteins are stable for up to 12 months when stored at -20 to -80°C. Reconstituted protein solution can be stored at 4-8°C for 2-7 days. Aliquots of reconstituted samples are stable at < -20°C for 3 months.
<b>Shipping</b>	This product is provided as lyophilized powder which is shipped with ice packs.
<b>Formulation</b>	Lyophilized from sterile PBS, pH 7.4 Normally 5 % - 8 % trehalose, mannitol and 0.01% Tween80 are added as protectants before lyophilization. Please refer to the specific buffer information in the printed manual.
<b>Reconstitution</b>	Please refer to the printed manual for detailed information.

## Data



> 95 % as determined by reducing SDS-PAGE.

## Background

Ephrin type-A receptor 7, also known as EphA7, belongs to the ephrin receptor subfamily of the protein-tyrosine kinase family which 16 known receptors (14 found in mammals) are involved: EPHA1, EPHA2, EPHA3, EPHA4, EPHA5, EPHA6, EPHA7, EPHA8, EPHA9, EPHA10, EPHB1, EPHB2, EPHB3, EPHB4, EPHB5, EPHB6. The Eph family of receptor tyrosine kinases (comprising EphA and EphB receptors) has been implicated in synapse formation and the regulation of synaptic function and plasticity<sup>6</sup>. Eph receptor-mediated signaling, which is triggered by ephrins<sup>7</sup>, probably modifies the properties of synapses during synaptic activation and remodeling. Ephrin receptors are components of cell

## For Research Use Only

A Reliable Research Partner in Life Science and Medicine

Toll-free: 1-888-852-8623

Web: [www.elabscience.com](http://www.elabscience.com)

Tel: 1-832-243-6086

Email: [techsupport@elabscience.com](mailto:techsupport@elabscience.com)

Fax: 1-832-243-6017

# Recombinant Rat EphA7/EHK3 Protein (His Tag)

Catalog Number:PKSR030360



signalling pathways involved in animal growth and development, forming the largest sub-family of receptor tyrosine kinases (RTKs). Ligand-mediated activation of Ephs induce various important downstream effects and Eph receptors have been studied for their potential roles in the development of cancer. Down-regulation of EphA7 secondary to hypermethylation has been reported in colorectal cancer. The expression of EphA7 was reduced in all tested gastric cancer cell lines; however, there is marked variability in expression among gastric carcinoma specimens. EphA7 may have roles in the pathogenesis and development of gastric carcinomas.

---

## For Research Use Only

A Reliable Research Partner in Life Science and Medicine

Toll-free: 1-888-852-8623

Tel: 1-832-243-6086

Fax: 1-832-243-6017

Web: [www.elabscience.com](http://www.elabscience.com)

Email: [techsupport@elabscience.com](mailto:techsupport@elabscience.com)