

Recombinant Rat IL20RB Protein (His Tag)

Catalog No. PKSR030418

Note: Centrifuge before opening to ensure complete recovery of vial contents.

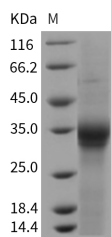
Description

Synonyms	IL20RB
Species	Rat
Expression Host	HEK293 Cells
Sequence	Met1-Pro227
Accession	B8K1X9
Calculated Molecular Weight	24.6 kDa
Observed molecular weight	32-36 kDa
Tag	C-His
Bioactivity	Not validated for activity

Properties

Purity	> 91 % as determined by reducing SDS-PAGE.
Endotoxin	< 1.0 EU per µg of the protein as determined by the LAL method.
Storage	Generally, lyophilized proteins are stable for up to 12 months when stored at -20 to -80°C. Reconstituted protein solution can be stored at 4-8°C for 2-7 days. Aliquots of reconstituted samples are stable at < -20°C for 3 months.
Shipping	This product is provided as lyophilized powder which is shipped with ice packs.
Formulation	Lyophilized from sterile PBS, pH 7.4 Normally 5 % - 8 % trehalose, mannitol and 0.01% Tween80 are added as protectants before lyophilization. Please refer to the specific buffer information in the printed manual.
Reconstitution	Please refer to the printed manual for detailed information.

Data



> 91 % as determined by reducing SDS-PAGE.

Background

IL20RB belongs to the type II cytokine receptor family. There are two kinds of type II cytokine receptors : cytokine receptors that bind type I and type II interferons; cytokine receptors that bind members of the interleukin-10 family

For Research Use Only

(interleukin-10, interleukin-20 and interleukin-22). Type II cytokine receptors are similar to type I cytokine receptors except they do not possess the signature sequence WSXWS that is characteristic of type I receptors. They are expressed on the surface of certain cells, which bind and respond to a select group of cytokines. These receptors are related predominantly by sequence similarities in their extracellular portions that are composed of tandem Ig-like domains. The intracellular domain of type II cytokine receptors is typically associated with a tyrosine kinase belonging to the Janus kinase (JAK) family. IL20RB and IL20RA (MIM 605620) form a heterodimeric receptor for interleukin-20.