

Recombinant Mouse APLP1/Amyloid-like Protein (His Tag)

Catalog No. PKSM040286

Note: Centrifuge before opening to ensure complete recovery of vial contents.

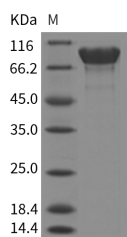
Description

Synonyms	Aplp1
Species	Mouse
Expression Host	HEK293 Cells
Sequence	Met1-Glu584
Accession	NP_031493.2
Calculated Molecular Weight	62.4 kDa
Tag	C-His
Bioactivity	Not validated for activity

Properties

Purity	> 95 % as determined by reducing SDS-PAGE.
Endotoxin	< 1.0 EU per µg of the protein as determined by the LAL method.
Storage	Generally, lyophilized proteins are stable for up to 12 months when stored at -20 to -80°C. Reconstituted protein solution can be stored at 4-8°C for 2-7 days. Aliquots of reconstituted samples are stable at < -20°C for 3 months.
Shipping	This product is provided as lyophilized powder which is shipped with ice packs.
Formulation	Lyophilized from sterile PBS, pH 7.4 Normally 5 % - 8 % trehalose, mannitol and 0.01% Tween80 are added as protectants before lyophilization. Please refer to the specific buffer information in the printed manual.
Reconstitution	Please refer to the printed manual for detailed information.

Data



> 95 % as determined by reducing SDS-PAGE.

Background

APLP1, also known as amyloid-like protein 1, is a member of the highly conserved amyloid precursor protein gene family. APLP1 is a membrane-associated glycoprotein that is cleaved by secretases in a manner similar to amyloid beta A4 precursor protein cleavage. APLP1, together with APLP2, are important modulators of glucose. APLP1 may also play

For Research Use Only

a role in synaptic maturation during cortical development. Alternatively spliced transcript variants encoding different isoforms have been described. APLP1 also is a mammalian homologue of amyloid precursor protein (APP). APP is a type I membrane protein that is genetically linked to Alzheimer's disease.