

# Recombinant Mouse EphA3 Protein (aa 569-984, His & GST Tag)



Catalog Number:PKSM040288

**Note:** Centrifuge before opening to ensure complete recovery of vial contents.

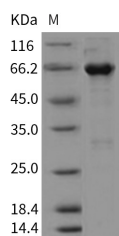
## Description

<b>Synonyms</b>	AW492086;Cek4;End3;ETK1;Hek;Hek4;Mek4;Tyro4
<b>Species</b>	Mouse
<b>Expression Host</b>	Baculovirus-Insect Cells
<b>Sequence</b>	Gly569-Val984
<b>Accession</b>	EDK98238.1
<b>Calculated Molecular Weight</b>	74.3 kDa
<b>Observed molecular weight</b>	66 kDa
<b>Tag</b>	N-His-GST
<b>Bioactivity</b>	Kinase activity untested

## Properties

<b>Purity</b>	> 90 % as determined by reducing SDS-PAGE.
<b>Endotoxin</b>	< 1.0 EU per µg of the protein as determined by the LAL method.
<b>Storage</b>	Store at < -20°C, stable for 6 months. Please minimize freeze-thaw cycles.
<b>Shipping</b>	This product is provided as liquid. It is shipped at frozen temperature with blue ice/gel packs. Upon receipt, store it immediately at < - 20°C.
<b>Formulation</b>	Supplied as sterile solution of 20mM Tris, 500mM NaCl, 10% glycerol, pH 8.0
<b>Reconstitution</b>	Not Applicable

## Data



> 90 % as determined by reducing SDS-PAGE.

## Background

EPHA3 gene belongs to the ephrin receptor subfamily of the protein-tyrosine kinase family. EPH and EPH-related receptors have been implicated in mediating developmental events, particularly in the nervous system. The ephrin receptors are divided into 2 groups based on the similarity of their extracellular domain sequences and their affinities for binding ephrin-A and ephrin-B ligands. EPHA3 gene encodes a protein that binds ephrin-A ligands. EPHA3 is involved in the retinotectal mapping of neurons. It may also control the segregation but not the guidance of motor and sensory axons during neuromuscular circuit development.

## For Research Use Only

A Reliable Research Partner in Life Science and Medicine

Toll-free: 1-888-852-8623

Web: [www.elabscience.com](http://www.elabscience.com)

Tel: 1-832-243-6086

Email: [techsupport@elabscience.com](mailto:techsupport@elabscience.com)

Fax: 1-832-243-6017