

# Recombinant Mouse SCPEP1/RISC Protein (His Tag)

Catalog Number:PKSM040327



**Note:** Centrifuge before opening to ensure complete recovery of vial contents.

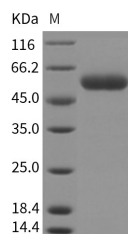
## Description

|                                    |   |
|------------------------------------|---|
| <b>Synonyms</b>                    | 2410018F01Rik;4833411K15Rik;AI957256;Risc |
| <b>Species</b>                     | Mouse                                     |
| <b>Expression Host</b>             | HEK293 Cells                              |
| <b>Sequence</b>                    | Met1-Glu452                               |
| <b>Accession</b>                   | NP_083299.3                               |
| <b>Calculated Molecular Weight</b> | 49.3 kDa                                  |
| <b>Tag</b>                         | C-His                                     |

## Properties

|                       |   |
|-----------------------|---|
| <b>Purity</b>         | > 95 % as determined by reducing SDS-PAGE.  |
| <b>Endotoxin</b>      | < 1.0 EU per $\mu\text{g}$ of the protein as determined by the LAL method.  |
| <b>Storage</b>        | Generally, lyophilized proteins are stable for up to 12 months when stored at -20 to -80°C. Reconstituted protein solution can be stored at 4-8°C for 2-7 days. Aliquots of reconstituted samples are stable at < -20°C for 3 months. |
| <b>Shipping</b>       | This product is provided as lyophilized powder which is shipped with ice packs.   |
| <b>Formulation</b>    | Lyophilized from sterile PBS, pH 7.4<br>Normally 5 % - 8 % trehalose, mannitol and 0.01% Tween80 are added as protectants before lyophilization.<br>Please refer to the specific buffer information in the printed manual.            |
| <b>Reconstitution</b> | Please refer to the printed manual for detailed information.  |

## Data



> 95 % as determined by reducing SDS-PAGE.

## For Research Use Only

A Reliable Research Partner in Life Science and Medicine

Toll-free: 1-888-852-8623

Web: [www.elabscience.com](http://www.elabscience.com)

Tel: 1-832-243-6086

Email: [techsupport@elabscience.com](mailto:techsupport@elabscience.com)

Fax: 1-832-243-6017