

# Recombinant Mouse REG3B/Pap1 Protein (His Tag)

Catalog Number:PKSM040337



**Note:** Centrifuge before opening to ensure complete recovery of vial contents.

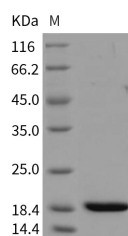
## Description

<b>Synonyms</b>	HIP;Pap;PAP1;REG-III
<b>Species</b>	Mouse
<b>Expression Host</b>	HEK293 Cells
<b>Sequence</b>	Met1-Gly175
<b>Accession</b>	NP_035166.1
<b>Calculated Molecular Weight</b>	18.1 kDa
<b>Observed molecular weight</b>	19 kDa
<b>Tag</b>	C-His

## Properties

<b>Purity</b>	> 95 % as determined by reducing SDS-PAGE.
<b>Endotoxin</b>	< 1.0 EU per µg of the protein as determined by the LAL method.
<b>Storage</b>	Generally, lyophilized proteins are stable for up to 12 months when stored at -20 to -80°C. Reconstituted protein solution can be stored at 4-8°C for 2-7 days. Aliquots of reconstituted samples are stable at < -20°C for 3 months.
<b>Shipping</b>	This product is provided as lyophilized powder which is shipped with ice packs.
<b>Formulation</b>	Lyophilized from sterile PBS, pH 7.4. Normally 5 % - 8 % trehalose, mannitol and 0.01 % Tween80 are added as protectants before lyophilization. Please refer to the specific buffer information in the printed manual.
<b>Reconstitution</b>	Please refer to the printed manual for detailed information.

## Data



> 95 % as determined by reducing SDS-PAGE.

## Background

Expression of REG3B was sufficient to inhibit cytokine-induced activation of STAT3 in IECs. The human REG3beta protein, the functional counterpart of mouse REG3B, inhibited STAT3 activity in human 293T cells, and its expression level in colorectal tumors correlated inversely with pSTAT3 level and survival times of patients. REG3B negatively regulates cytokine-induced activation of STAT3 in colon epithelial cells. This pathway might be targeted in patients with colitis to reduce carcinogenesis.

## For Research Use Only

A Reliable Research Partner in Life Science and Medicine

Toll-free: 1-888-852-8623

Web: [www.elabscience.com](http://www.elabscience.com)

Tel: 1-832-243-6086

Email: [techsupport@elabscience.com](mailto:techsupport@elabscience.com)

Fax: 1-832-243-6017