

Recombinant Mouse CREG/CREG1 Protein (His Tag)

Catalog Number:PKSM040376



Note: Centrifuge before opening to ensure complete recovery of vial contents.

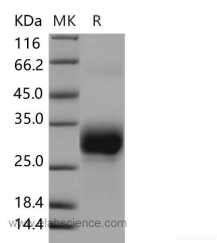
Description

Synonyms	CREG1; cellular repressor of E1A-stimulated genes; cellular repressor of E1A-stimulated genes 1CREG; protein CREG1
Species	Mouse
Expression Host	HEK293 Cells
Sequence	Met1-Gln220
Accession	O88668
Calculated Molecular Weight	22.9 kDa
Observed molecular weight	28-32 kDa
Tag	C-His

Properties

Purity	> 95 % as determined by SDS-PAGE
Endotoxin	< 1.0 EU per µg of the protein as determined by the LAL method.
Storage	Lyophilized proteins are stable for up to 12 months when stored at -20 to -80°C. Reconstituted protein solution can be stored at 4-8°C for 2-7 days. Aliquots of reconstituted samples are stable at < -20°C for 3 months.
Shipping	This product is provided as lyophilized powder which is shipped with ice packs.
Formulation	Lyophilized from sterile PBS, pH 7.4
Reconstitution	Please refer to the printed manual for detailed information.

Data



Background

CREG1 belongs to the CREG family. It is an adenovirus E1A protein which both activates and represses gene expression to promote cellular proliferation and inhibit differentiation. Thus it may contribute to the transcriptional control of cell growth and differentiation. The transcriptional control activity of cell growth requires interaction with IGF2R. CREG1 also antagonizes transcriptional activation and cellular transformation by E1A. It shares limited sequence similarity with E1A and binds both the general transcription factor TBP and the tumor suppressor pRb in vitro. CREG1 gene may contribute to the transcriptional control of cell growth and differentiation.

For Research Use Only

A Reliable Research Partner in Life Science and Medicine

Toll-free: 1-888-852-8623

Web: www.elabscience.com

Tel: 1-832-243-6086

Email: techsupport@elabscience.com

Fax: 1-832-243-6017