

Recombinant Mouse ESAM Protein (His Tag)

Catalog Number:PKSM040407



Note: Centrifuge before opening to ensure complete recovery of vial contents.

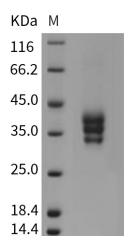
Description

Synonyms	2310008D05Rik;Esam1;W117m
Species	Mouse
Expression Host	HEK293 Cells
Sequence	Met 1-Ala 251
Accession	Q925F2
Calculated Molecular Weight	25.6 kDa
Observed molecular weight	33-43 kDa
Tag	C-His

Properties

Purity	> 92 % as determined by reducing SDS-PAGE.
Endotoxin	< 1.0 EU per µg of the protein as determined by the LAL method.
Storage	Generally, lyophilized proteins are stable for up to 12 months when stored at -20 to -80°C. Reconstituted protein solution can be stored at 4-8°C for 2-7 days. Aliquots of reconstituted samples are stable at < -20°C for 3 months.
Shipping	This product is provided as lyophilized powder which is shipped with ice packs.
Formulation	Lyophilized from sterile PBS, pH 7.4 Normally 5 % - 8 % trehalose, mannitol and 0.01 % Tween80 are added as protectants before lyophilization. Please refer to the specific buffer information in the printed manual.
Reconstitution	Please refer to the printed manual for detailed information.

Data



> 92 % as determined by reducing SDS-PAGE.

Background

Endothelial cell-selective adhesion molecule (ESAM) is a member of JAM family of immunoglobulin superfamily and consists of one V-type and one C2-type immunoglobulin domain, as well as a hydrophobic signal sequence, a single transmembrane region, and a cytoplasmic domain. It is specifically expressed at endothelial tight junctions and on activated platelets. ESAM at endothelial tight junctions participates in the migration of neutrophils through the vessel wall, possibly by influencing endothelial cell contacts. The adaptor protein membrane-associated guanylate kinase MAGI-1 has been identified as an intracellular binding partner of ESAM. Previous studies have indicated that ESAM regulates angiogenesis in the primary tumor growth and endothelial permeability. It suggest that ESAM has a redundant functional role in physiological angiogenesis but serves a unique and essential role in pathological angiogenic processes

For Research Use Only

A Reliable Research Partner in Life Science and Medicine

Toll-free: 1-888-852-8623

Web: www.elabscience.com

Tel: 1-832-243-6086

Email: techsupport@elabscience.com

Fax: 1-832-243-6017

Recombinant Mouse ESAM Protein (His Tag)

Catalog Number: PKSM040407



such as tumor growth.

For Research Use Only

A Reliable Research Partner in Life Science and Medicine

Toll-free: 1-888-852-8623

Tel: 1-832-243-6086

Fax: 1-832-243-6017

Web: www.elabscience.com

Email: techsupport@elabscience.com