

Recombinant Mouse OBCAM/OPCML Protein (Fc Tag)

Catalog No. PKSM040416

Note: Centrifuge before opening to ensure complete recovery of vial contents.

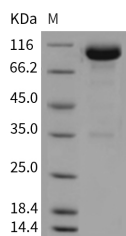
Description

Synonyms	2900075O15Rik;3732419F12;AI844366;B930023M13Rik;C230027C17;Gm181;Obcam;B-CAM;Gplu;Lu
Species	Mouse
Expression Host	HEK293 Cells
Sequence	Met 1-Ala 541
Accession	Q9R069
Calculated Molecular Weight	84.0 kDa
Observed molecular weight	95-105 kDa
Tag	C-hFc
Bioactivity	Measured by the ability of the immobilized protein to support the adhesion of HOS human osteogenic sarcoma cells. When cells are added to coated plates(5 µg/mL, 100µL/well), approximately 30-70% will adhere after 1 hour at 37°C.

Properties

Purity	> 92 % as determined by reducing SDS-PAGE.
Endotoxin	< 1.0 EU per µg of the protein as determined by the LAL method.
Storage	Generally, lyophilized proteins are stable for up to 12 months when stored at -20 to -80°C. Reconstituted protein solution can be stored at 4-8°C for 2-7 days. Aliquots of reconstituted samples are stable at < -20°C for 3 months.
Shipping	This product is provided as lyophilized powder which is shipped with ice packs.
Formulation	Lyophilized from sterile PBS, pH 7.4 Normally 5 % - 8 % trehalose, mannitol and 0.01% Tween80 are added as protectants before lyophilization. Please refer to the specific buffer information in the printed manual.
Reconstitution	Please refer to the printed manual for detailed information.

Data



> 92 % as determined by reducing SDS-PAGE.

For Research Use Only

Background

The Lutheran (Lu) blood group and basal cell adhesion molecule (BCAM) antigens are both carried by 2 glycoprotein isoforms of the immunoglobulin superfamily representing receptors for the laminin alpha(5) chain. It is a transmembrane receptor with five immunoglobulin-like domains in its extracellular region, and is therefore classified as a member of the immunoglobulin (Ig) gene family. In addition to red blood cells, Lu/BCAM proteins are expressed in endothelial cells of vascular capillaries and in epithelial cells of several tissues. BCAM/LU has a wide tissue distribution with a predominant expression in the basal layer of the epithelium and the endothelium of blood vessel walls. As designated as CD239 recently, BCAM and LU share a significant sequence similarity with the CD146 (MUC18) and CD166, and themselves are adhesion molecules that bind laminin with high affinity. Laminins are found in all basement membranes and are involved in cell differentiation, adhesion, migration, and proliferation. BCAM is upregulated following malignant transformation of some cell types in vivo and in vitro, thus being a candidate molecule involved in tumor progression. In addition, BCAM interacts with integrin in sickle red cells, and thus may potentially play a role in vaso-occlusive episodes.

For Research Use Only