

## Recombinant Mouse FcERI/FCER1A Protein (Fc Tag)

Catalog No. PKSM040429

*Note:* Centrifuge before opening to ensure complete recovery of vial contents.

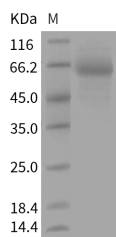
### Description

<b>Synonyms</b>	Fce1a;fcepsilonri;FcERI;Fcr-5
<b>Species</b>	Mouse
<b>Expression Host</b>	HEK293 Cells
<b>Sequence</b>	Met1-Gln204
<b>Accession</b>	P20489
<b>Calculated Molecular Weight</b>	48.0 kDa
<b>Observed molecular weight</b>	63 kDa
<b>Tag</b>	C-hFc
<b>Bioactivity</b>	Not validated for activity

### Properties

<b>Purity</b>	> 85 % as determined by reducing SDS-PAGE.
<b>Endotoxin</b>	< 1.0 EU per µg of the protein as determined by the LAL method.
<b>Storage</b>	Generally, lyophilized proteins are stable for up to 12 months when stored at -20 to -80°C. Reconstituted protein solution can be stored at 4-8°C for 2-7 days. Aliquots of reconstituted samples are stable at < -20°C for 3 months.
<b>Shipping</b>	This product is provided as lyophilized powder which is shipped with ice packs.
<b>Formulation</b>	Lyophilized from sterile PBS, pH 7.4 Normally 5 % - 8 % trehalose, mannitol and 0.01% Tween80 are added as protectants before lyophilization. Please refer to the specific buffer information in the printed manual.
<b>Reconstitution</b>	Please refer to the printed manual for detailed information.

### Data



> 85 % as determined by reducing SDS-PAGE.

### Background

FcERI, also known as FCER1A, is the alpha subunit of the immunoglobulin epsilon receptor (IgE receptor). IgE receptor is a high affinity IgE receptor which plays a central role in allergic disease, coupling allergen and mast cell to initiate the

### For Research Use Only

inflammatory and immediate hypersensitivity responses that are characteristic of disorders such as hay fever and asthma. The allergic response occurs when 2 or more IgE receptors are crosslinked via IgE molecules that in turn are bound to an allergen (antigen) molecule. A perturbation occurs that brings about the release of histamine and proteases from the granules in the cytoplasm of the mast cell and leads to the synthesis of prostaglandins and leukotrienes--potent effectors of the hypersensitivity response. IgE receptor is comprised of an alpha subunit(FcERI), a beta subunit, and two gamma subunits. FcERI is glycosylated and contains 2 Ig-like (immunoglobulin-like) domains.

---

## For Research Use Only

Toll-free: 1-888-852-8623

Web: [www.elabscience.com](http://www.elabscience.com)

Tel: 1-832-243-6086

Email: [techsupport@elabscience.com](mailto:techsupport@elabscience.com)

Fax: 1-832-243-6017