

Recombinant Mouse FcERI/FCER1A Protein (Fc Tag)

Catalog Number: PKSM040429



Note: Centrifuge before opening to ensure complete recovery of vial contents.

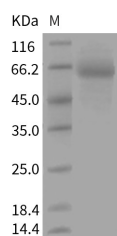
Description

Synonyms	Fce1a;fcepsilonri;FcERI;Fcr-5
Species	Mouse
Expression Host	HEK293 Cells
Sequence	Met1-Gln204
Accession	P20489
Calculated Molecular Weight	48.0 kDa
Observed molecular weight	63 kDa
Tag	C-hFc

Properties

Purity	> 85 % as determined by reducing SDS-PAGE.
Endotoxin	< 1.0 EU per µg of the protein as determined by the LAL method.
Storage	Generally, lyophilized proteins are stable for up to 12 months when stored at -20 to -80°C. Reconstituted protein solution can be stored at 4-8°C for 2-7 days. Aliquots of reconstituted samples are stable at < -20°C for 3 months.
Shipping	This product is provided as lyophilized powder which is shipped with ice packs.
Formulation	Lyophilized from sterile PBS, pH 7.4 Normally 5 % - 8 % trehalose, mannitol and 0.01 % Tween80 are added as protectants before lyophilization. Please refer to the specific buffer information in the printed manual.
Reconstitution	Please refer to the printed manual for detailed information.

Data



> 85 % as determined by reducing SDS-PAGE.

Background

FcERI, also known as FCER1A, is the alpha subunit of the immunoglobulin epsilon receptor (IgE receptor). IgE receptor is a high affinity IgE receptor which plays a central role in allergic disease, coupling allergen and mast cell to initiate the inflammatory and immediate hypersensitivity responses that are characteristic of disorders such as hay fever and asthma. The allergic response occurs when 2 or more IgE receptors are crosslinked via IgE molecules that in turn are bound to an allergen (antigen) molecule. A perturbation occurs that brings about the release of histamine and proteases from the granules in the cytoplasm of the mast cell and leads to the synthesis of prostaglandins and leukotrienes--potent effectors of the hypersensitivity response. IgE receptor is comprised of an alpha subunit(FcERI), a beta subunit, and two gamma subunits. FcERI is glycosylated and contains 2 Ig-like (immunoglobulin-like) domains.

For Research Use Only

A Reliable Research Partner in Life Science and Medicine

Toll-free: 1-888-852-8623

Web: www.elabscience.com

Tel: 1-832-243-6086

Email: techsupport@elabscience.com

Fax: 1-832-243-6017