

Recombinant Mouse GLIPR1 Protein (His Tag)

Catalog Number:PKSM040455



Note: Centrifuge before opening to ensure complete recovery of vial contents.

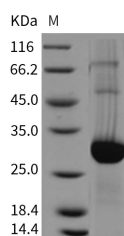
Description

| | |
|------------------------------------|------------------------------------|
| Synonyms | 2410114O14Rik;mRTVP-1;RTVP-1;RTVP1 |
| Species | Mouse |
| Expression Host | HEK293 Cells |
| Sequence | Met1-Thr223 |
| Accession | NP_082884.1 |
| Calculated Molecular Weight | 25.1 kDa |
| Observed molecular weight | 28-32 kDa |
| Tag | C-His |

Properties

| | |
|-----------------------|---|
| Purity | > 85 % as determined by reducing SDS-PAGE. |
| Endotoxin | < 1.0 EU per µg of the protein as determined by the LAL method. |
| Storage | Generally, lyophilized proteins are stable for up to 12 months when stored at -20 to -80°C. Reconstituted protein solution can be stored at 4-8°C for 2-7 days. Aliquots of reconstituted samples are stable at < -20°C for 3 months. |
| Shipping | This product is provided as lyophilized powder which is shipped with ice packs. |
| Formulation | Lyophilized from sterile PBS, pH 7.4 Normally 5 % - 8 % trehalose, mannitol and 0.01 % Tween80 are added as protectants before lyophilization. Please refer to the specific buffer information in the printed manual. |
| Reconstitution | Please refer to the printed manual for detailed information. |

Data



> 85 % as determined by reducing SDS-PAGE.

Background

Glioma pathogenesis-related protein 1, also known as Protein RTVP-1, GLIPR1 and GLIPR, is a single-pass membrane protein which belongs to the CRISP family. GLIPR1 / RTVP-1 was expressed in high levels in glioblastomas, whereas its expression in low-grade astrocytomas and normal brains was very low. Transfection of glioma cells with small interfering RNAs targeting GLIPR1 / RTVP-1 decreased cell proliferation in all the cell lines examined and induced cell apoptosis in some of them. Overexpression of GLIPR1 / RTVP-1 increased astrocyte and glioma cell proliferation and the anchorage-independent growth of the cells. In addition, overexpression of GLIPR1 / RTVP-1 rendered glioma cells more resistant to the apoptotic effect of tumor necrosis factor-related apoptosis-inducing ligand and serum deprivation. GLIPR1 / RTVP-1 regulated the invasion of glioma cells was evident by their enhanced migration through Matrigel and by their increased

For Research Use Only

A Reliable Research Partner in Life Science and Medicine

Toll-free: 1-888-852-8623

Web: www.elabscience.com

Tel: 1-832-243-6086

Email: techsupport@elabscience.com

Fax: 1-832-243-6017

Recombinant Mouse GLIPR1 Protein (His Tag)

Catalog Number:PKSM040455



invasion in a spheroid confrontation assay. The increased invasive potential of the GLIPR1 / RTVP-1 overexpressors was also shown by the increased activity of matrix metalloproteinase 2 in these cells. The expression of GLIPR1 / RTVP-1 is correlated with the degree of malignancy of astrocytic tumors and that GLIPR1 / RTVP-1 is involved in the regulation of the growth, survival, and invasion of glioma cells. GLIPR1 / RTVP-1 is a potential therapeutic target in gliomas.

For Research Use Only

A Reliable Research Partner in Life Science and Medicine

Toll-free: 1-888-852-8623

Web: www.elabscience.com

Tel: 1-832-243-6086

Email: techsupport@elabscience.com

Fax: 1-832-243-6017