

Recombinant Mouse SLC3A2/CD98 Protein (His Tag)

Catalog Number:PKSM040473



Note: Centrifuge before opening to ensure complete recovery of vial contents.

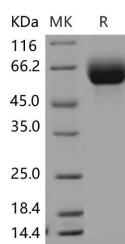
Description

Synonyms	4F2 Protein;Mouse;4F2HC Protein;Mouse;AI314110 Protein;Mouse;Cd98 Protein;Mouse;Ly-10 Protein;Mouse;Ly-m10 Protein;Mouse;Ly10 Protein;Mouse;Mdu1 Protein;Mouse;Mgp-2hc Protein;Mouse;NACAE Protein;Mouse
Species	Mouse
Expression Host	HEK293 Cells
Sequence	Ala 139-Ala 565
Accession	NP_001154885.1
Calculated Molecular Weight	49.2 kDa
Observed molecular weight	60-70 kDa
Tag	N-His

Properties

Purity	> 98 % as determined by reducing SDS-PAGE.
Endotoxin	< 1.0 EU per µg of the protein as determined by the LAL method.
Storage	Generally, lyophilized proteins are stable for up to 12 months when stored at -20 to -80°C. Reconstituted protein solution can be stored at 4-8°C for 2-7 days. Aliquots of reconstituted samples are stable at < -20°C for 3 months.
Shipping	This product is provided as lyophilized powder which is shipped with ice packs.
Formulation	Lyophilized from sterile PBS, pH 7.4 Normally 5 % - 8 % trehalose, mannitol and 0.01 % Tween80 are added as protectants before lyophilization. Please refer to the specific buffer information in the printed manual.
Reconstitution	Please refer to the printed manual for detailed information.

Data



> 98 % as determined by reducing SDS-PAGE.

Background

4F2 cell-surface antigen heavy chain, also known as 4F2 heavy chain antigen, Lymphocyte activation antigen 4F2 large subunit, CD98, SLC3A2 and MDU1, is a single-pass type II membrane protein which belongs to the SLC3A transporter family. MDU1 is expressed ubiquitously in all tissues tested with highest levels detected in kidney, placenta and testis and weakest level in thymus. During gestation, expression in the placenta is significantly stronger at full-term than at the mid-trimester stage. MDU1 is expressed in HUVECS and at low levels in resting peripheral blood T-lymphocytes and

For Research Use Only

A Reliable Research Partner in Life Science and Medicine

Toll-free: 1-888-852-8623

Web: www.elabscience.com

Tel: 1-832-243-6086

Email: techsupport@elabscience.com

Fax: 1-832-243-6017

Recombinant Mouse SLC3A2/CD98 Protein (His Tag)

Catalog Number:PKSM040473



quiescent fibroblasts. It is expressed in fetal liver and in the astrocytic process of primary astrocytic gliomas. MDU1 is also expressed in retinal endothelial cells and in the intestinal epithelial cell line Caco2-BBE. MDU1 is required for the function of light chain amino-acid transporters. It involved in sodium-independent, high-affinity transport of large neutral amino acids such as phenylalanine, tyrosine, leucine, arginine and tryptophan. MDU1 is involved in guiding and targeting of LAT1 and LAT2 to the plasma membrane. MDU1 plays a role in nitric oxide synthesis in human umbilical vein endothelial cells (HUVECs) via transport of L-arginine. It is required for normal and neoplastic cell growth. When associated with SLC7A5/LAT1, MDU1 is also involved in the transport of L-DOPA across the blood-brain barrier, and that of thyroid hormones triiodothyronine (T3) and thyroxine (T4) across the cell membrane in tissues such as placenta.

For Research Use Only

A Reliable Research Partner in Life Science and Medicine

Toll-free: 1-888-852-8623

Tel: 1-832-243-6086

Fax: 1-832-243-6017

Web: www.elabscience.com

Email: techsupport@elabscience.com