

# Recombinant Mouse E-Cadherin/CDH1 Protein (His Tag)



Catalog Number:PKSM040553

**Note:** Centrifuge before opening to ensure complete recovery of vial contents.

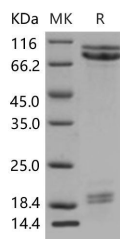
## Description

<b>Synonyms</b>	AA960649;ARC-1;E-cad;Ecad;L-CAM;Um;UVO
<b>Species</b>	Mouse
<b>Expression Host</b>	HEK293 Cells
<b>Sequence</b>	Met 1-Val 709
<b>Accession</b>	P09803
<b>Calculated Molecular Weight</b>	78.0 kDa
<b>Observed molecular weight</b>	80-100 kDa
<b>Tag</b>	C-His
<b>Bioactivity</b>	Measured by the ability of the immobilized protein to support the adhesion of MCF-7 human breast adenocarcinoma cells. When $5 \times 10^4$ cells/well are added to Recombinant Mouse Cadherin-1 coated plates (0.8 $\mu\text{g}/\text{mL}$ with 100 $\mu\text{L}/\text{well}$ ), approximately > 50% will adhere after 1 hour at 37°C.

## Properties

<b>Purity</b>	> 85 % as determined by reducing SDS-PAGE.
<b>Endotoxin</b>	< 1.0 EU per $\mu\text{g}$ of the protein as determined by the LAL method.
<b>Storage</b>	Generally, lyophilized proteins are stable for up to 12 months when stored at -20 to -80°C. Reconstituted protein solution can be stored at 4-8°C for 2-7 days. Aliquots of reconstituted samples are stable at < -20°C for 3 months.
<b>Shipping</b>	This product is provided as lyophilized powder which is shipped with ice packs.
<b>Formulation</b>	Lyophilized from sterile PBS, pH 7.4 Normally 5 % - 8 % trehalose, mannitol and 0.01 % Tween80 are added as protectants before lyophilization. Please refer to the specific buffer information in the printed manual.
<b>Reconstitution</b>	Please refer to the printed manual for detailed information.

## Data



> 85 % as determined by reducing SDS-PAGE.

## Background

Cadherins are calcium-dependent cell adhesion proteins which preferentially interact with themselves in a homophilic manner in connecting cells, and thus may contribute to the sorting of heterogeneous cell type. E-cadherin (E-Cad), also known as CDH1 and CD324, is a calcium-dependent cell adhesion molecule the intact function of which is crucial for the establishment and maintenance of epithelial tissue polarity and structural integrity. Mutations in CDH1 occur in diffuse

## For Research Use Only

A Reliable Research Partner in Life Science and Medicine

Toll-free: 1-888-852-8623

Web: [www.elabscience.com](http://www.elabscience.com)

Tel: 1-832-243-6086

Email: [techsupport@elabscience.com](mailto:techsupport@elabscience.com)

Fax: 1-832-243-6017

# Recombinant Mouse E-Cadherin/CDH1 Protein (His Tag)



Catalog Number:PKSM040553

type gastric cancer, lobular breast cancer, and endometrial cancer. In human cancers, partial or complete loss of E-cadherin expression correlates with malignancy. During apoptosis or with calcium influx, E-Cad is cleaved by the metalloproteinase to produce fragments of about 38 kDa (E-CAD/CTF1), 33 kDa (E-CAD/CTF2) and 29 kDa (E-CAD/CTF3), respectively. E-Cad has been identified as a potent invasive suppressor, as downregulation of E-cadherin expression is involved in dysfunction of the cell-cell adhesion system, and often correlates with strong invasive potential and poor prognosis of human carcinomas.

---

## For Research Use Only

A Reliable Research Partner in Life Science and Medicine

Toll-free: 1-888-852-8623

Tel: 1-832-243-6086

Fax: 1-832-243-6017

Web: [www.elabscience.com](http://www.elabscience.com)

Email: [techsupport@elabscience.com](mailto:techsupport@elabscience.com)