

Recombinant Mouse SerpinB10 Protein (His Tag)

Catalog Number:PKSM040577



Note: Centrifuge before opening to ensure complete recovery of vial contents.

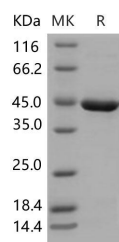
Description

| | |
|------------------------------------|---------------------------------|
| Synonyms | 9830131G07;BB233602;Serpib10-ps |
| Species | Mouse |
| Expression Host | Baculovirus-Insect Cells |
| Sequence | Met 1-Pro 397 |
| Accession | Q8K1K6-1 |
| Calculated Molecular Weight | 46.5 kDa |
| Observed molecular weight | 44 kDa |
| Tag | C-His |

Properties

| | |
|-----------------------|--|
| Purity | > 94 % as determined by reducing SDS-PAGE. |
| Endotoxin | < 1.0 EU per µg of the protein as determined by the LAL method. |
| Storage | Generally, lyophilized proteins are stable for up to 12 months when stored at -20 to -80°C. Reconstituted protein solution can be stored at 4-8°C for 2-7 days. Aliquots of reconstituted samples are stable at < -20°C for 3 months. |
| Shipping | This product is provided as lyophilized powder which is shipped with ice packs. |
| Formulation | Lyophilized from sterile 50mM Tris, 100mM NaCl, pH 8.0 Normally 5 % - 8 % trehalose, mannitol and 0.01% Tween80 are added as protectants before lyophilization. Please refer to the specific buffer information in the printed manual. |
| Reconstitution | Please refer to the printed manual for detailed information. |

Data



> 94 % as determined by reducing SDS-PAGE.

Background

Serpins are the largest and most diverse family of serine protease inhibitors which are involved in a number of fundamental biological processes such as blood coagulation, complement activation, fibrinolysis, angiogenesis, inflammation and tumor suppression and are expressed in a cell-specific manner. Serpins are a group of proteins with similar structures that were first identified as a set of proteins able to inhibit proteases. The acronym serpin was originally coined because many serpins inhibit chymotrypsin-like serine proteases (serine protease inhibitors). Over 1000 serpins have been identified. Mouse SerpinB10, also known as Peptidase inhibitor 10, PI-10, Bomapin and SERPINB10, is a nucleus and cytoplasm protein which belongs to theserpin family and Ov-serpin subfamily. SerpinB10 is expressed specifically in the bone marrow. SerpinB10 is a protease inhibitor that may play a role in the regulation of protease

For Research Use Only

A Reliable Research Partner in Life Science and Medicine

Toll-free: 1-888-852-8623

Web: www.elabscience.com

Tel: 1-832-243-6086

Email: techsupport@elabscience.com

Fax: 1-832-243-6017

Recombinant Mouse SerpinB10 Protein (His Tag)

Catalog Number:PKSM040577



activities during hematopoiesis and apoptosis induced by TNF. SerpinB10 is a redox-sensitive nuclear serpin that augments proliferation or apoptosis of leukaemia cells, depending on growth factors availability. SerpinB10 may regulate protease activities in the cytoplasm and in the nucleus.

For Research Use Only

A Reliable Research Partner in Life Science and Medicine

Toll-free: 1-888-852-8623

Tel: 1-832-243-6086

Fax: 1-832-243-6017

Web: www.elabscience.com

Email: techsupport@elabscience.com