

Recombinant Mouse SerpinB3/SCCA1 Protein (His Tag)

Catalog Number:PKSM040578



Note: Centrifuge before opening to ensure complete recovery of vial contents.

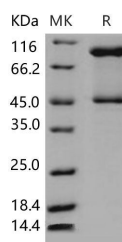
Description

Synonyms	1110001H02Rik;1110013A16Rik;Scca2;Serpib3c;Serpib4
Species	Mouse
Expression Host	Baculovirus-Insect Cells
Sequence	Met 1-Pro 386
Accession	NP_958751.2
Calculated Molecular Weight	46.5 kDa
Observed molecular weight	46 & 95 kDa
Tag	C-His

Properties

Purity	> 95 % as determined by reducing SDS-PAGE.
Endotoxin	< 1.0 EU per µg of the protein as determined by the LAL method.
Storage	Generally, lyophilized proteins are stable for up to 12 months when stored at -20 to -80°C. Reconstituted protein solution can be stored at 4-8°C for 2-7 days. Aliquots of reconstituted samples are stable at < -20°C for 3 months.
Shipping	This product is provided as lyophilized powder which is shipped with ice packs.
Formulation	Lyophilized from sterile 50mM Tris 100mM NaCl, pH 8.0 Normally 5 % - 8 % trehalose, mannitol and 0.01% Tween80 are added as protectants before lyophilization. Please refer to the specific buffer information in the printed manual.
Reconstitution	Please refer to the printed manual for detailed information.

Data



> 95 % as determined by reducing SDS-PAGE.

Background

Serpins are the largest and most diverse family of serine protease inhibitors which are involved in a number of fundamental biological processes such as blood coagulation, complement activation, fibrinolysis, angiogenesis, inflammation and tumor suppression and are expressed in a cell-specific manner. Serpins are a group of proteins with similar structures that were first identified as a set of proteins able to inhibit proteases. The acronym serpin was originally coined because many serpins inhibit chymotrypsin-like serine proteases (serine protease inhibitors). Over 1000 serpins have been identified. Mouse SerpinB3, also known as Squamous cell carcinoma antigen 1, SCCA-1, SERPINB3, SCCA and SCCA1, is a cytoplasm protein which belongs to theserpin family and Ov-serpin subfamily. SerpinB3 may act as a protease inhibitor to modulate the host immune response against tumor cells. Mouse SerpinB3a and SerpinB3b, but not

For Research Use Only

A Reliable Research Partner in Life Science and Medicine

Toll-free: 1-888-852-8623

Web: www.elabscience.com

Tel: 1-832-243-6086

Email: techsupport@elabscience.com

Fax: 1-832-243-6017

Recombinant Mouse SerpinB3/SCCA1 Protein (His Tag)

Catalog Number: PKSM040578



SerpinB3c, are functional, inhibiting both serine and cysteine proteinases with different inhibitory profiles due to the difference of two amino acids in their reactive site loops. SerpinB3a is ubiquitously expressed in most tissues, whereas expression of SerpinB3b is limited to keratinocytes. SerpinB3a and SerpinB3b may play different roles by inhibiting intrinsic or extrinsic proteinases with different expression distributions and different inhibitory profiles.

For Research Use Only

A Reliable Research Partner in Life Science and Medicine

Toll-free: 1-888-852-8623

Tel: 1-832-243-6086

Fax: 1-832-243-6017

Web: www.elabscience.com

Email: techsupport@elabscience.com