

Recombinant Mouse SLAMF8 Protein (His Tag)

Catalog Number:PKSM040579



Note: Centrifuge before opening to ensure complete recovery of vial contents.

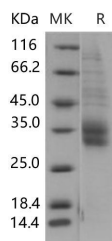
Description

Synonyms	SLAM family member 8;B-lymphocyte activator macrophage expressed;CD353;Slamf8;Blame;SBB142
Species	Mouse
Expression Host	HEK293 Cells
Sequence	Met 1-Asp 231
Accession	NP_083360.2
Calculated Molecular Weight	24.8 kDa
Observed molecular weight	33-38 kDa
Tag	C-His
Bioactivity	Measured by its ability to bind biotinylated mouse SLAMF8 in a functional ELISA.

Properties

Purity	> 80 % as determined by reducing SDS-PAGE.
Endotoxin	< 1.0 EU per µg of the protein as determined by the LAL method.
Storage	Generally, lyophilized proteins are stable for up to 12 months when stored at -20 to -80°C. Reconstituted protein solution can be stored at 4-8°C for 2-7 days. Aliquots of reconstituted samples are stable at < -20°C for 3 months.
Shipping	This product is provided as lyophilized powder which is shipped with ice packs.
Formulation	Lyophilized from sterile PBS, pH 7.4 Normally 5 % - 8 % trehalose, mannitol and 0.01% Tween80 are added as protectants before lyophilization. Please refer to the specific buffer information in the printed manual.
Reconstitution	Please refer to the printed manual for detailed information.

Data



> 80 % as determined by reducing SDS-PAGE.

Background

The signaling lymphocyte activation molecule (SLAM) family includes homophilic and heterophilic receptors that modulate both adaptive and innate immune responses. These receptors share a common ectodomain organization: a membrane-proximal immunoglobulin constant domain and a membrane-distal immunoglobulin variable domain that is responsible for ligand recognition. SLAM family of receptors is expressed by a wide range of immune cells. Through their cytoplasmic domain, SLAM family receptors associate with SLAM-associated protein (SAP)-related molecules, a group of cytoplasmic adaptors composed almost exclusively of an SRC homology 2 domain. SLAM family receptors, in

For Research Use Only

A Reliable Research Partner in Life Science and Medicine

Toll-free: 1-888-852-8623

Web: www.elabscience.com

Tel: 1-832-243-6086

Email: techsupport@elabscience.com

Fax: 1-832-243-6017

Recombinant Mouse SLAMF8 Protein (His Tag)

Catalog Number:PKSM040579



association with SAP family adaptors, have crucial roles during normal immune reactions in innate and adaptive immune cells. Mouse SLAM family member 8, also known as B-lymphocyte activator macrophage expressed, BCM-like membrane protein, SLAMF8 and BLAME, is a single-pass type I membrane protein. It contains one Ig-like C2-type (immunoglobulin-like) domain. SLAMF8 / BLAME is expressed in lymph node, spleen, thymus and bone marrow. It may play a role in B-lineage commitment and/or modulation of signaling through the B-cell receptor.

For Research Use Only

A Reliable Research Partner in Life Science and Medicine

Toll-free: 1-888-852-8623

Tel: 1-832-243-6086

Fax: 1-832-243-6017

Web: www.elabscience.com

Email: techsupport@elabscience.com