

Recombinant Mouse EphA7/EHK3 Protein (His Tag)

Catalog No. PKSM040593

Note: Centrifuge before opening to ensure complete recovery of vial contents.

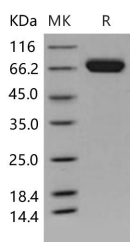
Description

Synonyms	Cek11;Ebk;Ehk3;Hek11;Mdk1;RP23-33D17.1
Species	Mouse
Expression Host	HEK293 Cells
Sequence	Met 1-Ile 556
Accession	Q61772-1
Calculated Molecular Weight	60.4 kDa
Observed molecular weight	70 kDa
Tag	C-His
Bioactivity	Immobilized mouse EphA7 at 2 µg/ml (100 µl/well) can bind mouse EphrinA4 with a linear range of 0.08-10 ng/ml.

Properties

Purity	> 97 % as determined by reducing SDS-PAGE.
Endotoxin	< 1.0 EU per µg of the protein as determined by the LAL method.
Storage	Generally, lyophilized proteins are stable for up to 12 months when stored at -20 to -80°C. Reconstituted protein solution can be stored at 4-8°C for 2-7 days. Aliquots of reconstituted samples are stable at < -20°C for 3 months.
Shipping	This product is provided as lyophilized powder which is shipped with ice packs.
Formulation	Lyophilized from sterile PBS, pH 7.4 Normally 5 % - 8 % trehalose, mannitol and 0.01% Tween80 are added as protectants before lyophilization. Please refer to the specific buffer information in the printed manual.
Reconstitution	Please refer to the printed manual for detailed information.

Data



> 97 % as determined by reducing SDS-PAGE.

Background

Ephrin type-A receptor 7, also known as EphA7, belongs to the ephrin receptor subfamily of the protein-tyrosine kinase

For Research Use Only

family which 16 known receptors (14 found in mammals) are involved: EPHA1, EPHA2, EPHA3, EPHA4, EPHA5, EPHA6, EPHA7, EPHA8, EPHA9, EPHA10, EPHB1, EPHB2, EPHB3, EPHB4, EPHB5, EPHB6. The Eph family of receptor tyrosine kinases (comprising EphA and EphB receptors) has been implicated in synapse formation and the regulation of synaptic function and plasticity⁶. Eph receptor-mediated signaling, which is triggered by ephrins⁷, probably modifies the properties of synapses during synaptic activation and remodeling. Ephrin receptors are components of cell signalling pathways involved in animal growth and development, forming the largest sub-family of receptor tyrosine kinases (RTKs). Ligand-mediated activation of Ephs induce various important downstream effects and Eph receptors have been studied for their potential roles in the development of cancer. Down-regulation of EphA7 secondary to hypermethylation has been reported in colorectal cancer. The expression of EphA7 was reduced in all tested gastric cancer cell lines; however, there is marked variability in expression among gastric carcinoma specimens. EphA7 may have roles in the pathogenesis and development of gastric carcinomas.