

Recombinant Mouse ASAM Protein (His Tag)

Catalog Number:PKSM040617



Note: Centrifuge before opening to ensure complete recovery of vial contents.

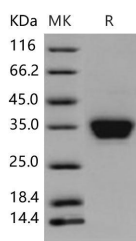
Description

Synonyms	9030425E11Rik;ACAM;ASP5;AW557819
Species	Mouse
Expression Host	HEK293 Cells
Sequence	Met 1-Met 232
Accession	Q8R373-1
Calculated Molecular Weight	25.6 kDa
Observed molecular weight	33-36 kDa
Tag	C-His
Bioactivity	Measured by the ability of the immobilized protein to support the adhesion of the HUVEC human umbilical vein endothelial cell line. When 4×10^4 cells/well are added to mouse ASAM coated plates (30 $\mu\text{g/ml}$, 100 $\mu\text{l/well}$), approximately > 40 % will adhere after one hour at 37 °C.

Properties

Purity	> 97 % as determined by reducing SDS-PAGE.
Endotoxin	< 1.0 EU per μg of the protein as determined by the LAL method.
Storage	Generally, lyophilized proteins are stable for up to 12 months when stored at -20 to -80°C. Reconstituted protein solution can be stored at 4-8°C for 2-7 days. Aliquots of reconstituted samples are stable at < -20°C for 3 months.
Shipping	This product is provided as lyophilized powder which is shipped with ice packs.
Formulation	Lyophilized from sterile PBS, pH 7.4 Normally 5 % - 8 % trehalose, mannitol and 0.01 % Tween80 are added as protectants before lyophilization. Please refer to the specific buffer information in the printed manual.
Reconstitution	Please refer to the printed manual for detailed information.

Data



> 97 % as determined by reducing SDS-PAGE.

Background

Adipocyte-specific adhesion molecule (ASAM), also known as ACAM and CLMP, is a type I transmembrane protein and a member of the CTX (cortical thymocyte marker in Xenopus) family within the immunoglobulin superfamily. ASAM protein is highly expressed in the small intestine and placenta, and is found at intermediate levels in the heart, skeletal muscle, colon, spleen, kidney, and lung, and appears in low levels in the liver and peripheral blood leukocytes as well.

For Research Use Only

A Reliable Research Partner in Life Science and Medicine

Toll-free: 1-888-852-8623

Web: www.elabscience.com

Tel: 1-832-243-6086

Email: techsupport@elabscience.com

Fax: 1-832-243-6017

Recombinant Mouse ASAM Protein (His Tag)

Catalog Number:PKSM040617



ASAM is a transmembrane component of tight junctions in epithelial cells that can mediate cell aggregation and regulate transepithelial resistance across polarized epithelial cells. In addition, its expression is strongly correlated with white adipose tissue (WAT) mass of human and rodents with obesity.

For Research Use Only

A Reliable Research Partner in Life Science and Medicine

Toll-free: 1-888-852-8623

Tel: 1-832-243-6086

Fax: 1-832-243-6017

Web: www.elabscience.com

Email: techsupport@elabscience.com