

# Recombinant Mouse CD2 Protein (His Tag)

Catalog Number:PKSM040628



**Note:** Centrifuge before opening to ensure complete recovery of vial contents.

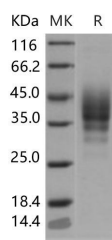
## Description

<b>Synonyms</b>	LFA-2;Ly-37;Ly37
<b>Species</b>	Mouse
<b>Expression Host</b>	HEK293 Cells
<b>Sequence</b>	Met 1-Ser 203
<b>Accession</b>	NP_038514.1
<b>Calculated Molecular Weight</b>	22 kDa
<b>Observed molecular weight</b>	35-45 kDa
<b>Tag</b>	C-His

## Properties

<b>Purity</b>	> 98 % as determined by reducing SDS-PAGE.
<b>Endotoxin</b>	< 1.0 EU per µg of the protein as determined by the LAL method.
<b>Storage</b>	Generally, lyophilized proteins are stable for up to 12 months when stored at -20 to -80°C. Reconstituted protein solution can be stored at 4-8°C for 2-7 days. Aliquots of reconstituted samples are stable at < -20°C for 3 months.
<b>Shipping</b>	This product is provided as lyophilized powder which is shipped with ice packs.
<b>Formulation</b>	Lyophilized from sterile PBS, pH 7.4 Normally 5 % - 8 % trehalose, mannitol and 0.01 % Tween80 are added as protectants before lyophilization. Please refer to the specific buffer information in the printed manual.
<b>Reconstitution</b>	Please refer to the printed manual for detailed information.

## Data



> 98 % as determined by reducing SDS-PAGE.

## Background

T-cell surface antigen CD2, also known as T-cell surface antigen T11/Leu-5, and SRBC, is a single-pass type I membrane protein. It contains one Ig-like C2-type domain and one Ig-like V-type domain. CD2 is a cell adhesion molecule expressed on T cells and is recognized as a target for CD48 (rats) and CD58 (humans). CD2 has been shown to set quantitative thresholds in T cell activation both in vivo and in vitro. Further, intracellular CD2 signaling pathways and networks are being discovered by the identification of several cytosolic tail binding proteins. CD2 interacts with lymphocyte function-associated antigen (LFA-3) and CD48/BCM1 to mediate adhesion between T-cells and other cell types. CD2 is implicated in the triggering of T-cells, the cytoplasmic domain of CD2 is implicated in the signaling function. The complex of CD2 and CD58 also plays an important role in enhancing the adhesion of T lymphocytes to target cells, and promoting

## For Research Use Only

A Reliable Research Partner in Life Science and Medicine

Toll-free: 1-888-852-8623

Web: [www.elabscience.com](http://www.elabscience.com)

Tel: 1-832-243-6086

Email: [techsupport@elabscience.com](mailto:techsupport@elabscience.com)

Fax: 1-832-243-6017

# Recombinant Mouse CD2 Protein (His Tag)

Catalog Number:PKSM040628



hyperplasia and activation of T lymphocytes. As a cell surface glycoprotein, CD2 expressed on most human T cells and natural killer (NK) cells and plays an important role in mediating cell adhesion in both T-lymphocytes and in signal transduction.

---

## For Research Use Only

A Reliable Research Partner in Life Science and Medicine

Toll-free: 1-888-852-8623

Tel: 1-832-243-6086

Fax: 1-832-243-6017

Web: [www.elabscience.com](http://www.elabscience.com)

Email: [techsupport@elabscience.com](mailto:techsupport@elabscience.com)