

Recombinant Mouse MDGA2/MAMDC1 Protein (His Tag)



Catalog Number:PKSM040686

Note: Centrifuge before opening to ensure complete recovery of vial contents.

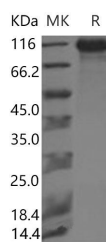
Description

Synonyms	6720489L24Rik;9330209L04Rik;Adp;Mamdc1
Species	Mouse
Expression Host	HEK293 Cells
Sequence	Met 1-Asp 924
Accession	P60755-1
Calculated Molecular Weight	103 kDa
Observed molecular weight	110-120 kDa
Tag	C-His

Properties

Purity	> 90 % as determined by reducing SDS-PAGE.
Endotoxin	< 1.0 EU per µg of the protein as determined by the LAL method.
Storage	Generally, lyophilized proteins are stable for up to 12 months when stored at -20 to -80°C. Reconstituted protein solution can be stored at 4-8°C for 2-7 days. Aliquots of reconstituted samples are stable at < -20°C for 3 months.
Shipping	This product is provided as lyophilized powder which is shipped with ice packs.
Formulation	Lyophilized from sterile PBS, pH 7.4 Normally 5 % - 8 % trehalose, mannitol and 0.01% Tween80 are added as protectants before lyophilization. Please refer to the specific buffer information in the printed manual.
Reconstitution	Please refer to the printed manual for detailed information.

Data



> 90 % as determined by reducing SDS-PAGE.

Background

MAM domain-containing glycosylphosphatidylinositol anchor protein 2, also known as MAM domain-containing protein 1, MDGA2 and MAMDC1, is a cell membrane protein which contains six Ig-like (immunoglobulin-like) domains and one MAM domain. Analyses of the full-length coding region of MDGA1 and MDGA2 indicate that they encode proteins that comprise a novel subgroup of the Ig superfamily and have a unique structural organization consisting of six immunoglobulin (Ig)-like domains followed by a single MAM domain. Biochemical characterization demonstrates that MDGA1 and MDGA2 proteins are highly glycosylated, and that MDGA1 is tethered to the cell membrane by a GPI anchor. The MDGAs are differentially expressed by subpopulations of neurons in both the central and peripheral nervous systems, including neurons of the basilar pons, inferior olive, cerebellum, cerebral cortex, olfactory bulb, spinal cord, and

For Research Use Only

A Reliable Research Partner in Life Science and Medicine

Toll-free: 1-888-852-8623

Web: www.elabscience.com

Tel: 1-832-243-6086

Email: techsupport@elabscience.com

Fax: 1-832-243-6017

Recombinant Mouse MDGA2/MAMDC1 Protein (His Tag)



Catalog Number:PKSM040686

dorsal root and trigeminal ganglia. The similarity of MDGAs to other Ig-containing molecules and their temporal-spatial patterns of expression within restricted neuronal populations, for example migrating pontine neurons and D1 spinal interneurons, suggest a role for these novel proteins in regulating neuronal migration, as well as other aspects of neural development, including axon guidance.

For Research Use Only

A Reliable Research Partner in Life Science and Medicine

Toll-free: 1-888-852-8623

Tel: 1-832-243-6086

Fax: 1-832-243-6017

Web: www.elabscience.com

Email: techsupport@elabscience.com