

Recombinant Mouse Carboxypeptidase B1/CPB1 Protein (His Tag)



Catalog Number: PKSM040708

Note: Centrifuge before opening to ensure complete recovery of vial contents.

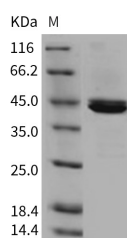
Description

Synonyms	0910001A18Rik;1810063F02Rik;2210008M23Rik;AI504870
Species	Mouse
Expression Host	HEK293 Cells
Sequence	Met 1-Tyr 415
Accession	NP_083982.1
Calculated Molecular Weight	47.5 kDa
Observed molecular weight	43-45 kDa
Tag	C-His
Bioactivity	Measured by its ability to cleave a colorimetric peptide substrate, Hippuryl-Arg. The specific activity is > 5,000 pmoles/min/μg.

Properties

Purity	> 94 % as determined by reducing SDS-PAGE.
Endotoxin	< 1.0 EU per μg of the protein as determined by the LAL method.
Storage	Generally, lyophilized proteins are stable for up to 12 months when stored at -20 to -80°C. Reconstituted protein solution can be stored at 4-8°C for 2-7 days. Aliquots of reconstituted samples are stable at < -20°C for 3 months.
Shipping	This product is provided as lyophilized powder which is shipped with ice packs.
Formulation	Lyophilized from sterile 20mM MES, 150mM NaCl, pH 6.5 Normally 5 % - 8 % trehalose, mannitol and 0.01 % Tween80 are added as protectants before lyophilization. Please refer to the specific buffer information in the printed manual.
Reconstitution	Please refer to the printed manual for detailed information.

Data



> 94 % as determined by reducing SDS-PAGE.

Background

Carboxypeptidase B1, also well known as pancreatic procarboxypeptidase B (PCPB), is a highly pancreas-specific protein (PASP), and has been identified previously as a serum marker for acute pancreatitis and pancreatic graft rejection. As the prototype for those human exopeptidases that cleave off basic C-terminal residues, CPB1 specifically cleaves the C-terminal Arg and Lys residues with a preference for Arg. The B1 and B2 forms of procarboxypeptidase B differ from each other mainly in isoelectric point. The deduced amino acid sequence of PCPB predicts a 416-amino acid preproenzyme consisting of a 15-aa signal peptide, a 95-aa activation peptide and a 307-aa mature chain. The secreted

For Research Use Only

A Reliable Research Partner in Life Science and Medicine

Toll-free: 1-888-852-8623

Web: www.elabscience.com

Tel: 1-832-243-6086

Email: techsupport@elabscience.com

Fax: 1-832-243-6017

Recombinant Mouse Carboxypeptidase B1/CPB1 Protein (His Tag)



Catalog Number: PKSM040708

PCPB zymogen is converted to enzymatically active CPB1 by limited proteolysis by trypsin.

For Research Use Only

A Reliable Research Partner in Life Science and Medicine

Toll-free: 1-888-852-8623

Web: www.elabscience.com

Tel: 1-832-243-6086

Email: techsupport@elabscience.com

Fax: 1-832-243-6017