

## Recombinant Mouse Trypsin 2/PRSS2 Protein (His Tag)

Catalog No. PKSM040711

**Note:** Centrifuge before opening to ensure complete recovery of vial contents.

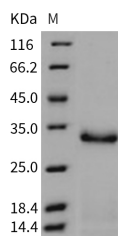
### Description

|                                    |  |
|------------------------------------|--|
| <b>Synonyms</b>                    | Prss2;Ta;Tesp4;Try2;TRY8;TRYP  |
| <b>Species</b>                     | Mouse  |
| <b>Expression Host</b>             | HEK293 Cells   |
| <b>Sequence</b>                    | Met 1-Asn 246  |
| <b>Accession</b>                   | NP_033456.1  |
| <b>Calculated Molecular Weight</b> | 26.2 kDa   |
| <b>Observed molecular weight</b>   | 32 kDa   |
| <b>Tag</b>                         | C-His  |
| <b>Bioactivity</b>                 | Measured by its ability to cleave the fluorogenic peptide substrate, Mca-RPKPVE-Nval-WRK(Dnp)-NH <sub>2</sub> (Anaspec, Catalog #27096). The specific activity is > 1500 pmoles/min/μg. (Activation description: The proenzyme needs to be activated by enteropeptidase for an activated form) |

### Properties

|                       |   |
|-----------------------|---|
| <b>Purity</b>         | > 92 % as determined by reducing SDS-PAGE.  |
| <b>Endotoxin</b>      | < 1.0 EU per μg of the protein as determined by the LAL method.   |
| <b>Storage</b>        | Generally, lyophilized proteins are stable for up to 12 months when stored at -20 to -80°C. Reconstituted protein solution can be stored at 4-8°C for 2-7 days. Aliquots of reconstituted samples are stable at < -20°C for 3 months. |
| <b>Shipping</b>       | This product is provided as lyophilized powder which is shipped with ice packs.   |
| <b>Formulation</b>    | Lyophilized from sterile PBS, pH 7.5<br>Normally 5 % - 8 % trehalose, mannitol and 0.01% Tween80 are added as protectants before lyophilization.<br>Please refer to the specific buffer information in the printed manual.            |
| <b>Reconstitution</b> | Please refer to the printed manual for detailed information.  |

### Data



> 92 % as determined by reducing SDS-PAGE.

### For Research Use Only

## Background

Trypsin-2, also known as Trypsin II, Anionic trypsinogen, Serine protease 2, PRSS2 and TRY2, is a secreted protein which belongs to the trypsin serine protease family including Trypsin, PRSS1, PRSS2 and PRSS3. It consists of a signal peptide (residues 1-15), a pro region (residues 16-23), and a proteolytically active mature chain (residues 24-247). PRSS2 contains onepeptidase S1 domain. It is secreted into theduodenum,hydrolysing peptides into their smaller building blocks, which is necessary for the uptake of protein in the food. It is secreted by the pancreas in the form of inactivezymogen,trypsinogen and cleaved to its active form in the small intestine when the pancreas is stimulated bycholecystokinin through the common activation mechanism.