

Recombinant Mouse TIM1/HAVCR1 Protein (His & Fc Tag)

Catalog No. PKSM040735

Note: Centrifuge before opening to ensure complete recovery of vial contents.

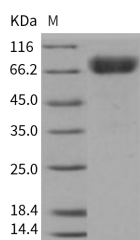
Description

Synonyms	Hepatitis A virus cellular receptor 1 homolog;HAVcr-1;Kidney injury molecule 1;KIM-1;T cell membrane protein 1;TIM-1;Timd1;AI503787
Species	Mouse
Expression Host	HEK293 Cells
Sequence	Tyr 22-Thr 212
Accession	NP_001160104.1
Calculated Molecular Weight	49.0 kDa
Observed molecular weight	80-85 kDa
Tag	C-His-Fc
Bioactivity	Not validated for activity

Properties

Purity	> 97 % as determined by reducing SDS-PAGE.
Endotoxin	< 1.0 EU per µg of the protein as determined by the LAL method.
Storage	Generally, lyophilized proteins are stable for up to 12 months when stored at -20 to -80°C. Reconstituted protein solution can be stored at 4-8°C for 2-7 days. Aliquots of reconstituted samples are stable at < -20°C for 3 months.
Shipping	This product is provided as lyophilized powder which is shipped with ice packs.
Formulation	Lyophilized from sterile 20mM Tris-Citrate, 150mM NaCl, pH 6.5 Normally 5 % - 8 % trehalose, mannitol and 0.01% Tween80 are added as protectants before lyophilization. Please refer to the specific buffer information in the printed manual.
Reconstitution	Please refer to the printed manual for detailed information.

Data



> 97 % as determined by reducing SDS-PAGE.

Background

HAV cellular receptor 1 (HAVCR1), also known as Kidney injury molecule 1 (KIM-1) and T cell immunoglobulinmucin

For Research Use Only

1 (TIM-1), is a type â... integral membrane glycoprotein. KIM-1 protein is widely expressed with highest levels in kidney and testis. It has been shown to play a major role as a human susceptibility gene for asthma, allergy and autoimmunity. IgA1lambda is a specific ligand of KIM-1 protein and that their association has a synergistic effect in virus-receptor interactions. KIM-1 involves in the pathogenesis of acute kidney injury. It had been confirmed that KIM-1 is a human urinary renal dysfunction biomarker. Moreover, KIM-1 protein is a novel regulatory molecule of flow-induced calcium signaling.