

# Recombinant Mouse S100A15/S100A7A Protein (His & MBP Tag)



Catalog Number:PKSM040795

**Note:** Centrifuge before opening to ensure complete recovery of vial contents.

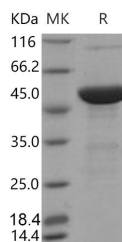
## Description

<b>Synonyms</b>	AY465109;Gm1020;S100a15;S100a15a;S100a1711;S100A7f;S100A7L1
<b>Species</b>	Mouse
<b>Expression Host</b>	E.coli
<b>Sequence</b>	Met 1-Tyr 108
<b>Accession</b>	Q6S5I3
<b>Calculated Molecular Weight</b>	56.5 kDa
<b>Observed molecular weight</b>	50 kDa
<b>Tag</b>	N-His-MBP

## Properties

<b>Purity</b>	> 90 % as determined by reducing SDS-PAGE.
<b>Endotoxin</b>	Please contact us for more information.
<b>Storage</b>	Generally, lyophilized proteins are stable for up to 12 months when stored at -20 to -80°C. Reconstituted protein solution can be stored at 4-8°C for 2-7 days. Aliquots of reconstituted samples are stable at < -20°C for 3 months.
<b>Shipping</b>	This product is provided as lyophilized powder which is shipped with ice packs.
<b>Formulation</b>	Lyophilized from sterile PBS, pH 7.5 Normally 5 % - 8 % trehalose, mannitol and 0.01 % Tween80 are added as protectants before lyophilization. Please refer to the specific buffer information in the printed manual.
<b>Reconstitution</b>	Please refer to the printed manual for detailed information.

## Data



> 90 % as determined by reducing SDS-PAGE.

## Background

Koebnerisin is also known as protein S100-A7A (S100A7A), S100 calcium-binding protein A7-like 1 (S100A7L1) or S100 calcium-binding protein A15 (S100A15). Human S100A7A / S100A15 is a novel member of the S100 family of EF-hand calcium-binding proteins and was recently identified in psoriasis, where it is significantly upregulated in lesional skin. S100A7 is expressed by both normal cultured and malignant keratinocytes and malignant breast epithelial cells within ductal carcinoma in situ, suggesting an association with abnormal pathways of differentiation. S100A7 plays a role in the pathogenesis of inflammatory skin disease, as a chemotactic factor for hematopoietic cells. It also plays a role in early stages of breast tumor progression in association with the development of the invasive phenotype. The association of the 11.2 kDa S100A7A / S100A15 with psoriasis suggests that it contributes to the pathogenesis of the disease and could

## For Research Use Only

A Reliable Research Partner in Life Science and Medicine

Toll-free: 1-888-852-8623

Web: [www.elabscience.com](http://www.elabscience.com)

Tel: 1-832-243-6086

Email: [techsupport@elabscience.com](mailto:techsupport@elabscience.com)

Fax: 1-832-243-6017

# Recombinant Mouse S100A15/S100A7A Protein (His & MBP Tag)



Catalog Number:PKSM040795

---

provide a molecular target for therapy.

---

## For Research Use Only

A Reliable Research Partner in Life Science and Medicine

Toll-free: 1-888-852-8623

Web: [www.elabscience.com](http://www.elabscience.com)

Tel: 1-832-243-6086

Email: [techsupport@elabscience.com](mailto:techsupport@elabscience.com)

Fax: 1-832-243-6017