

Recombinant Mouse SerpinB8 Protein (His Tag)

Catalog Number:PKSM040799



Note: Centrifuge before opening to ensure complete recovery of vial contents.

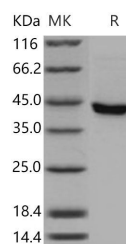
Description

Synonyms	CAP-2;CAP2;NK10;ovalbumin;Spi8
Species	Mouse
Expression Host	Baculovirus-Insect Cells
Sequence	Met 1-Pro 374
Accession	NP_035589.1
Calculated Molecular Weight	43.6 kDa
Observed molecular weight	43.6 kDa
Tag	C-His

Properties

Purity	> 94 % as determined by reducing SDS-PAGE.
Endotoxin	< 1.0 EU per µg of the protein as determined by the LAL method.
Storage	Generally, lyophilized proteins are stable for up to 12 months when stored at -20 to -80°C. Reconstituted protein solution can be stored at 4-8°C for 2-7 days. Aliquots of reconstituted samples are stable at < -20°C for 3 months.
Shipping	This product is provided as lyophilized powder which is shipped with ice packs.
Formulation	Lyophilized from sterile 50mM Tris, 100mM NaCl, pH 8.0 Normally 5 % - 8 % trehalose, mannitol and 0.01% Tween80 are added as protectants before lyophilization. Please refer to the specific buffer information in the printed manual.
Reconstitution	Please refer to the printed manual for detailed information.

Data



> 94 % as determined by reducing SDS-PAGE.

Background

Serpins are the largest and most diverse family of serine protease inhibitors which are involved in a number of fundamental biological processes such as blood coagulation, complement activation, fibrinolysis, angiogenesis, inflammation and tumor suppression and are expressed in a cell-specific manner. Mouse SerpinB8, also known as Cytoplasmic antiproteinase 2, Peptidase inhibitor 8, SerpinB8, PI-8, SERPINB8 and CAP2, is a member of the Serpin superfamily. SERPINB8 was broadly expressed. In normal neuroendocrine tissues, strongest SerpinB8 expression was detected in islets of Langerhans of the pancreas. Moderate SerpinB8 expression was observed in neuroendocrine cells of the thyroid, adrenal cortex, colon, and pituitary gland. In the pancreas, SerpinB8 is specifically expressed by insulin-producing beta cells, and can be used as an additional diagnostic immunohistochemical marker. Mouse SerpinB8

For Research Use Only

A Reliable Research Partner in Life Science and Medicine

Toll-free: 1-888-852-8623

Web: www.elabscience.com

Tel: 1-832-243-6086

Email: techsupport@elabscience.com

Fax: 1-832-243-6017

Recombinant Mouse SerpinB8 Protein (His Tag)

Catalog Number:PKSM040799



distribution alters during kidney regeneration, possibly to control a prohormone convertase involved in inflammation or tissue repair.

For Research Use Only

A Reliable Research Partner in Life Science and Medicine

Toll-free: 1-888-852-8623

Tel: 1-832-243-6086

Fax: 1-832-243-6017

Web: www.elabscience.com

Email: techsupport@elabscience.com