

Recombinant Human cytomegalovirus (HCMV) Glycoprotein B / gB Protein (Fc Tag)

Catalog Number:PKSV030207

Note: Centrifuge before opening to ensure complete recovery of vial contents.

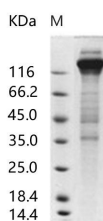
Description

Synonyms	Glycoprotein B:gB
Species	CMV
Expression Host	HEK293 Cells
Sequence	Met 1-Lys 700
Accession	AAA45920.1
Calculated Molecular Weight	118 kDa
Observed molecular weight	160-170 kDa
Tag	C-hFc

Properties

Purity	> 80 % as determined by reducing SDS-PAGE.
Endotoxin	< 1.0 EU per µg of the protein as determined by the LAL method.
Storage	Generally, lyophilized proteins are stable for up to 12 months when stored at -20 to -80°C. Reconstituted protein solution can be stored at 4-8°C for 2-7 days. Aliquots of reconstituted samples are stable at < -20°C for 3 months.
Shipping	This product is provided as lyophilized powder which is shipped with ice packs.
Formulation	Lyophilized from sterile 100mM glycerol, 10mM NaCl, 50mM Tris, pH 7.5 Normally 5 % - 8 % trehalose, mannitol and 0.01% Tween80 are added as protectants before lyophilization. Please refer to the specific buffer information in the printed manual.
Reconstitution	Please refer to the printed manual for detailed information.

Data



> 80 % as determined by reducing SDS-PAGE.

Background

Cytomegalovirus (CMV) (human herpesvirus 5) glycoprotein B, also referred as CMV gB or gB, which belongs to the herpesviridae glycoprotein B family. It is a 97-amino acid glycoprotein encoded by the ORF of UL55. Cytomegalovirus Glycoprotein B protein is the most abundant component of the envelope, a target of neutralizing antibodies with at least two defined neutralizing epitopes and an essential replication component. Cytomegalovirus Glycoprotein B protein plays important roles in HCMV entry, cell-cell spread of internal virions, and fusion of infected cells. In addition, Cytomegalovirus Glycoprotein B protein is one envelope protein capable of heparin binding. It forms a physical association with host cell annexin II independent of the presence of calcium.

For Research Use Only

A Reliable Research Partner in Life Science and Medicine

Toll-free: 1-888-852-8623

Web: www.elabscience.com

Tel: 1-832-243-6086

Email: techsupport@elabscience.com

Fax: 1-832-243-6017