

Recombinant Mouse L-Selectin/SELL Protein (His Tag)

Catalog Number:PKSM040885



Note: Centrifuge before opening to ensure complete recovery of vial contents.

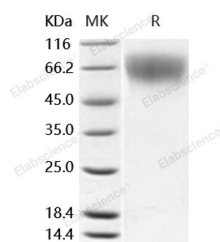
Description

Synonyms	L-selectin;Sell;CD62 antigen-like family member L;Leukocyte adhesion molecule 1;LECAM1;Lymph node homing receptor;Lymphocyte antigen 22;CD62L;LECAM-1;Lnhr;Ly-22;Ly-m22;Lyam-1;Lyam1
Species	Mouse
Expression Host	HEK293 Cells
Sequence	Met 1-Asn 332
Accession	NP_035476.1
Calculated Molecular Weight	34.7 kDa
Observed molecular weight	70-80 kDa
Tag	C-His

Properties

Purity	> 98 % as determined by reducing SDS-PAGE.
Endotoxin	< 1.0 EU per µg of the protein as determined by the LAL method.
Storage	Generally, lyophilized proteins are stable for up to 12 months when stored at -20 to -80°C. Reconstituted protein solution can be stored at 4-8°C for 2-7 days. Aliquots of reconstituted samples are stable at < -20°C for 3 months.
Shipping	This product is provided as lyophilized powder which is shipped with ice packs.
Formulation	Lyophilized from sterile PBS, pH 7.4 Normally 5 % - 8 % trehalose, mannitol and 0.01 % Tween80 are added as protectants before lyophilization. Please refer to the specific buffer information in the printed manual.
Reconstitution	Please refer to the printed manual for detailed information.

Data



> 98 % as determined by reducing SDS-PAGE.

Background

L-selectin (SELL), also known as CD62L, is a key adhesion molecule that regulates both the migration of leukocytes at sites of inflammation and the recirculation of lymphocytes between blood and lymphoid tissues. It belongs to the selectin family of proteins, and consisting of a large, highly glycosylated, extracellular domain, a single spanning transmembrane domain and a small cytoplasmic tail. L-selectin is the only selectin expressed on leukocytes and mediates a number of leukocyte-endothelial interactions. L-selectin acts as a "homing receptor" for leukocytes to enter secondary lymphoid tissues via high endothelial venules. Ligands present on endothelial cells will bind to leukocyte expressing L-selectin,

For Research Use Only

A Reliable Research Partner in Life Science and Medicine

Toll-free: 1-888-852-8623

Web: www.elabscience.com

Tel: 1-832-243-6086

Email: techsupport@elabscience.com

Fax: 1-832-243-6017

Recombinant Mouse L-Selectin/SELL Protein (His Tag)

Catalog Number:PKSM040885



slowing leukocyte trafficking through the blood, and facilitating entry into a secondary lymphoid organ at that point. L-selectin-mediated lymphocyte recirculation is required for maintaining the appropriate tissue distribution of lymphocyte subpopulations including naïve and effector subsets such as regulatory T cells. In addition, L-selectin-mediated entry into peripheral lymph nodes is required for optimal induction of lymphocyte homeostatic proliferation during lymphopenia. Importantly, L-selectin has been shown to have both adhesive and signaling functions during leukocyte migration. L-selectin has also been shown to mediate leukocyte recruitment during chronic inflammatory and autoimmune diseases and thus is a potential therapeutic target for drug development.

For Research Use Only

A Reliable Research Partner in Life Science and Medicine

Toll-free: 1-888-852-8623

Tel: 1-832-243-6086

Fax: 1-832-243-6017

Web: www.elabscience.com

Email: techsupport@elabscience.com