

SLC30A1 Polyclonal Antibody

Catalog Number:E-AB-65925

Note: Centrifuge before opening to ensure complete recovery of vial contents.

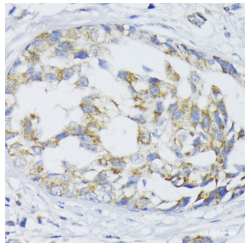
Description

Reactivity	Human,Rat
Immunogen	A synthetic peptide of human SLC30A1 (NP_067017.2).
Host	Rabbit
Isotype	IgG
Purification	Affinity purification
Conjugation	Unconjugated
Formulation	PBS with 0.02% sodium azide, 50% glycerol, pH7.3.

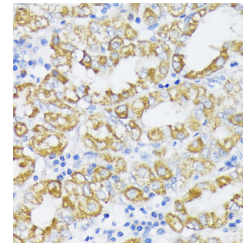
Applications Recommended Dilution

IHC	1:50-1:200
------------	------------

Data



Immunohistochemistry of paraffin-embedded Human mammary cancer using SLC30A1 Polyclonal Antibody at dilution of 1:100 (40x lens).



Immunohistochemistry of paraffin-embedded Human stomach using SLC30A1 Polyclonal Antibody at dilution of 1:100 (40x lens).

Preparation & Storage

Storage Store at -20°C. Avoid freeze / thaw cycles.

Background

SLC30A1 (Solute Carrier Family 30 Member 1) is a Protein Coding gene. Diseases associated with SLC30A1 include Acrodermatitis Enteropathica, Zinc-Deficiency Type and Epidermodysplasia Verruciformis 1. Among its related pathways are Metal ion SLC transporters and Mineral absorption. Gene Ontology (GO) annotations related to this gene include cation transmembrane transporter activity and calcium channel inhibitor activity. An important paralog of this gene is SLC30A10.

For Research Use Only

A Reliable Research Partner in Life Science and Medicine

Toll-free: 1-888-852-8623

Web: www.elabscience.com

Tel: 1-832-243-6086

Email: techsupport@elabscience.com

Fax: 1-832-243-6017