

# SMC1B Polyclonal Antibody

Catalog Number:E-AB-65980



**Note:** Centrifuge before opening to ensure complete recovery of vial contents.

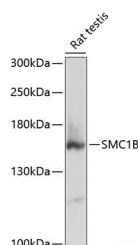
## Description

<b>Reactivity</b>	Rat
<b>Immunogen</b>	Recombinant fusion protein of human SMC1B (NP_001278430.1).
<b>Host</b>	Rabbit
<b>Isotype</b>	IgG
<b>Purification</b>	Affinity purification
<b>Conjugation</b>	Unconjugated
<b>Formulation</b>	PBS with 0.02% sodium azide, 50% glycerol, pH7.3.

## Applications Recommended Dilution

<b>WB</b>	1:500-1:1000
-----------	--------------

## Data



Western blot analysis of extracts of Rat testis using SMC1B Polyclonal Antibody at dilution of 1:3000.

**Observed Mw:144kDa**

**Calculated Mw:135kDa/143kDa**

## Preparation & Storage

<b>Storage</b>	Store at -20°C. Avoid freeze / thaw cycles.
----------------	---

## Background

SMC1B (Structural Maintenance Of Chromosomes 1B) is a Protein Coding gene. Diseases associated with SMC1B include Corneal Dystrophy, Subepithelial Mucinous and 46 Xx Gonadal Dysgenesis. Among its related pathways are Meiosis and Cell Cycle, Mitotic. An important paralog of this gene is SMC1A.

## For Research Use Only

A Reliable Research Partner in Life Science and Medicine

Toll-free: 1-888-852-8623

Web: [www.elabscience.com](http://www.elabscience.com)

Tel: 1-832-243-6086

Email: [techsupport@elabscience.com](mailto:techsupport@elabscience.com)

Fax: 1-832-243-6017