

Recombinant Mouse LYVE1/HAR Protein (Fc Tag)

Catalog Number:PKSM040946



Note: Centrifuge before opening to ensure complete recovery of vial contents.

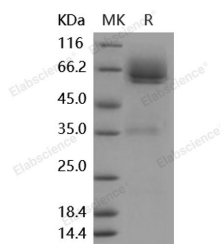
Description

Synonyms	1200012G08Rik;Crsbp-1;Lyve-1;Xlkd1
Species	Mouse
Expression Host	HEK293 Cells
Sequence	Met1-Gly228
Accession	Q8BHC0
Calculated Molecular Weight	49.1 kDa
Observed molecular weight	63 kDa
Tag	C-hFc

Properties

Purity	> 85 % as determined by reducing SDS-PAGE.
Endotoxin	< 1.0 EU per µg of the protein as determined by the LAL method.
Storage	Generally, lyophilized proteins are stable for up to 12 months when stored at -20 to -80°C. Reconstituted protein solution can be stored at 4-8°C for 2-7 days. Aliquots of reconstituted samples are stable at < -20°C for 3 months.
Shipping	This product is provided as lyophilized powder which is shipped with ice packs.
Formulation	Lyophilized from sterile PBS, pH 7.4 Normally 5 % - 8 % trehalose, mannitol and 0.01 % Tween80 are added as protectants before lyophilization. Please refer to the specific buffer information in the printed manual.
Reconstitution	Please refer to the printed manual for detailed information.

Data



> 85 % as determined by reducing SDS-PAGE.

Background

LYVE1, also known as LYVE-1, is a type I integral membrane glycoprotein. It contains 1 Link domain and mainly expressed in endothelial cells lining lymphatic vessels. LYVE1 acts as a receptor and binds to both soluble and immobilized hyaluronan. It may function in lymphatic hyaluronan transport and have a role in tumor metastasis. LYVE1 also is a cell surface receptor on lymphatic endothelial cells that can be used as a lymphatic endothelial cell marker, and sort these cells for experimental purposes. It also functions as a ligand-specific transporter trafficking between intracellular organelles and the plasma membrane. It plays a role in autocrine regulation of cell growth mediated by growth regulators containing cell surface retention sequence binding. It may act as an hyaluronan transporter, either mediating its uptake for catabolism within lymphatic endothelial cells themselves, or its transport into the lumen of

For Research Use Only

A Reliable Research Partner in Life Science and Medicine

Toll-free: 1-888-852-8623

Web: www.elabscience.com

Tel: 1-832-243-6086

Email: techsupport@elabscience.com

Fax: 1-832-243-6017

Recombinant Mouse LYVE1/HAR Protein (Fc Tag)

Catalog Number:PKSM040946



afferent lymphatic vessels for subsequent re-uptake and degradation in lymph nodes.

For Research Use Only

A Reliable Research Partner in Life Science and Medicine

Toll-free: 1-888-852-8623

Tel: 1-832-243-6086

Fax: 1-832-243-6017

Web: www.elabscience.com

Email: techsupport@elabscience.com