

PLCXD2 Polyclonal Antibody

Catalog Number:E-AB-66231



Note: Centrifuge before opening to ensure complete recovery of vial contents.

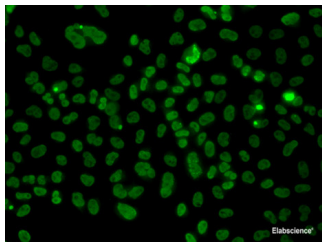
Description

| | |
|---------------------|--|
| Reactivity | Human,Mouse,Rat |
| Immunogen | Recombinant fusion protein of human PLCXD2 (NP_001172035.1). |
| Host | Rabbit |
| Isotype | IgG |
| Purification | Affinity purification |
| Conjugation | Unconjugated |
| Formulation | PBS with 0.02% sodium azide, 50% glycerol, pH7.3. |

Applications Recommended Dilution

| | |
|-----------|------------|
| IF | 1:50-1:100 |
|-----------|------------|

Data



Immunofluorescence analysis of A549 cells using PLCXD2 Polyclonal Antibody

Preparation & Storage

Storage Store at -20°C. Avoid freeze / thaw cycles.

Background

PLCXD2 (Phosphatidylinositol Specific Phospholipase C X Domain Containing 2) is a Protein Coding gene. Gene Ontology (GO) annotations related to this gene include obsolete signal transducer activity and phosphoric diester hydrolase activity. An important paralog of this gene is PLCXD3.

For Research Use Only

A Reliable Research Partner in Life Science and Medicine

Toll-free: 1-888-852-8623

Web: www.elabscience.com

Tel: 1-832-243-6086

Email: techsupport@elabscience.com

Fax: 1-832-243-6017