

# SLC5A6 Polyclonal Antibody

Catalog Number:E-AB-66355

**Note:** Centrifuge before opening to ensure complete recovery of vial contents.

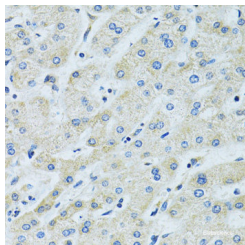
## Description

<b>Reactivity</b>	Human,Mouse,Rat
<b>Immunogen</b>	A synthetic peptide of human SLC5A6 (NP_066918.2).
<b>Host</b>	Rabbit
<b>Isotype</b>	IgG
<b>Purification</b>	Affinity purification
<b>Conjugation</b>	Unconjugated
<b>Formulation</b>	PBS with 0.02% sodium azide, 50% glycerol, pH7.3.

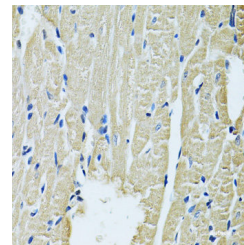
## Applications Recommended Dilution

<b>IHC</b>	1:50-1:200
------------	------------

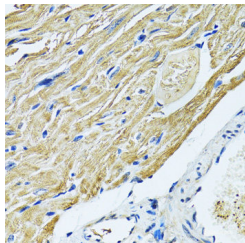
## Data



Immunohistochemistry of paraffin-embedded Human liver using SLC5A6 Polyclonal Antibody at dilution of 1:100 (40x lens).



Immunohistochemistry of paraffin-embedded Rat heart using SLC5A6 Polyclonal Antibody at dilution of 1:100 (40x lens).



Immunohistochemistry of paraffin-embedded Mouse heart using SLC5A6 Polyclonal Antibody at dilution of 1:100 (40x lens).

## Preparation & Storage

**Storage** Store at -20°C. Avoid freeze / thaw cycles.

## Background

SLC5A6 (Solute Carrier Family 5 Member 6) is a Protein Coding gene. Diseases associated with SLC5A6 include Biotin Deficiency and Retinitis Pigmentosa 50. Among its related pathways are Metabolism of water-soluble vitamins and cofactors and NRF2 pathway. Gene Ontology (GO) annotations related to this gene include transporter activity and sodium-dependent multivitamin transmembrane transporter activity. An important paralog of this gene is SLC5A8.

## For Research Use Only

A Reliable Research Partner in Life Science and Medicine

Toll-free: 1-888-852-8623

Web: [www.elabscience.com](http://www.elabscience.com)

Tel: 1-832-243-6086

Email: [techsupport@elabscience.com](mailto:techsupport@elabscience.com)

Fax: 1-832-243-6017