

SH2D3A Polyclonal Antibody

Catalog Number:E-AB-66358



Note: Centrifuge before opening to ensure complete recovery of vial contents.

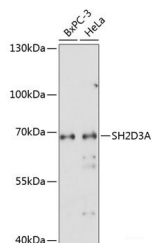
Description

Reactivity	Human
Immunogen	Recombinant fusion protein of human SH2D3A (NP_005481.2).
Host	Rabbit
Isotype	IgG
Purification	Affinity purification
Conjugation	Unconjugated
Formulation	PBS with 0.02% sodium azide, 50% glycerol, pH7.3.

Applications Recommended Dilution

WB	1:500-1:2000
-----------	--------------

Data



Western blot analysis of extracts of various cell lines using SH2D3A Polyclonal Antibody at dilution of 1:1000.

Observed Mw:63kDa

Calculated Mw:52kDa/63kDa

Preparation & Storage

Storage	Store at -20°C. Avoid freeze / thaw cycles.
----------------	---

Background

SH2D3A (SH2 Domain Containing 3A) is a Protein Coding gene. Diseases associated with SH2D3A include Severe Acute Respiratory Syndrome and Eastern Equine Encephalitis. Gene Ontology (GO) annotations related to this gene include guanyl-nucleotide exchange factor activity and SH3/SH2 adaptor activity. An important paralog of this gene is BCAR3.

For Research Use Only

A Reliable Research Partner in Life Science and Medicine

Toll-free: 1-888-852-8623

Web: www.elabscience.com

Tel: 1-832-243-6086

Email: techsupport@elabscience.com

Fax: 1-832-243-6017