

POP5 Polyclonal Antibody

Catalog Number:E-AB-66843



Note: Centrifuge before opening to ensure complete recovery of vial contents.

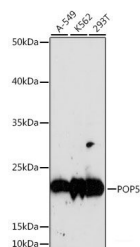
Description

Reactivity	Human,Rat
Immunogen	A synthetic peptide of human POP5 (NP_057002.2).
Host	Rabbit
Isotype	IgG
Purification	Affinity purification
Conjugation	Unconjugated
Formulation	PBS with 0.02% sodium azide, 50% glycerol, pH7.3.

Applications Recommended Dilution

WB	1:500-1:2000
-----------	--------------

Data



Western blot analysis of extracts of various cell lines using POP5 Polyclonal Antibody at dilution of 1:1000.

Observed Mw:19kDa

Calculated Mw:12kDa/18kDa

Preparation & Storage

Storage	Store at -20°C. Avoid freeze / thaw cycles.
----------------	---

Background

POP5 (POP5 Homolog, Ribonuclease P/MRP Subunit) is a Protein Coding gene. Diseases associated with POP5 include Cartilage-Hair Hypoplasia. Among its related pathways are tRNA processing and Gene Expression. Gene Ontology (GO) annotations related to this gene include ribonuclease activity and ribonuclease P activity.

For Research Use Only

A Reliable Research Partner in Life Science and Medicine

Toll-free: 1-888-852-8623

Web: www.elabscience.com

Tel: 1-832-243-6086

Email: techsupport@elabscience.com

Fax: 1-832-243-6017