

RPP40 Polyclonal Antibody

Catalog Number:E-AB-67048

Note: Centrifuge before opening to ensure complete recovery of vial contents.

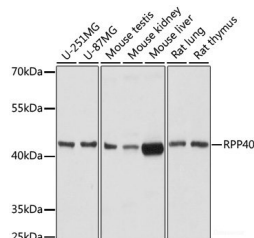
Description

Reactivity	Human,Mouse,Rat
Immunogen	Recombinant fusion protein of human RPP40 (NP_001273061).
Host	Rabbit
Isotype	IgG
Purification	Affinity purification
Conjugation	Unconjugated
Formulation	PBS with 0.02% sodium azide, 50% glycerol, pH7.3.

Applications Recommended Dilution

WB	1:500-1:2000
-----------	--------------

Data



Western blot analysis of extracts of various cell lines
using RPP40 Polyclonal Antibody at dilution of
1:1000.

Observed Mw:42kDa
Calculated Mw:42kDa

Preparation & Storage

Storage Store at -20°C. Avoid freeze / thaw cycles.

Background

RPP40 (Ribonuclease P/MRP Subunit P40) is a Protein Coding gene. Diseases associated with RPP40 include Chromosome 6Pter-P24 Deletion Syndrome. Among its related pathways are rRNA processing in the nucleus and cytosol and tRNA processing. Gene Ontology (GO) annotations related to this gene include ribonuclease P activity.

For Research Use Only

A Reliable Research Partner in Life Science and Medicine

Toll-free: 1-888-852-8623

Web: www.elabscience.com

Tel: 1-832-243-6086

Email: techsupport@elabscience.com

Fax: 1-832-243-6017