

SLC38A3 Polyclonal Antibody

Catalog Number:E-AB-67618



Note: Centrifuge before opening to ensure complete recovery of vial contents.

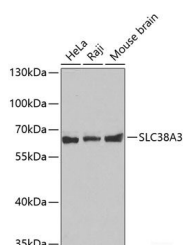
Description

Reactivity	Human,Mouse,Rat
Immunogen	Recombinant fusion protein of human SLC38A3 (NP_006832.1).
Host	Rabbit
Isotype	IgG
Purification	Affinity purification
Conjugation	Unconjugated
Formulation	PBS with 0.02% sodium azide, 50% glycerol, pH7.3.

Applications Recommended Dilution

WB	1:500-1:2000
-----------	--------------

Data



Western blot analysis of extracts of various cell lines using SLC38A3 Polyclonal Antibody.

Observed Mw:60kDa
Calculated Mw:55kDa

Preparation & Storage

Storage Store at -20°C. Avoid freeze / thaw cycles.

Background

SLC38A3 (Solute Carrier Family 38 Member 3) is a Protein Coding gene. Diseases associated with SLC38A3 include Dissociative Disorder and Sarcocystosis. Among its related pathways are Transport of glucose and other sugars, bile salts and organic acids, metal ions and amine compounds and Circadian entrainment. Gene Ontology (GO) annotations related to this gene include symporter activity and L-alanine transmembrane transporter activity. An important paralog of this gene is SLC38A5.

For Research Use Only

A Reliable Research Partner in Life Science and Medicine

Toll-free: 1-888-852-8623

Web: www.elabscience.com

Tel: 1-832-243-6086

Email: techsupport@elabscience.com

Fax: 1-832-243-6017