

# RFFL Polyclonal Antibody

Catalog Number: E-AB-67763



**Note:** Centrifuge before opening to ensure complete recovery of vial contents.

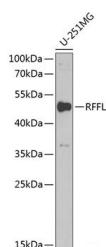
## Description

<b>Reactivity</b>	Human, Mouse, Rat
<b>Immunogen</b>	Recombinant fusion protein of human RFFL (NP_001017368.1).
<b>Host</b>	Rabbit
<b>Isotype</b>	IgG
<b>Purification</b>	Affinity purification
<b>Conjugation</b>	Unconjugated
<b>Formulation</b>	PBS with 0.02% sodium azide, 50% glycerol, pH7.3.

## Applications Recommended Dilution

<b>WB</b>	1:500-1:2000
-----------	--------------

## Data



Western blot analysis of extracts of U-251MG cells using RFFL Polyclonal Antibody at dilution of 1:1000.

**Observed Mw: 50kDa**

**Calculated Mw: 36kDa/39kDa/40kDa**

## Preparation & Storage

**Storage** Store at -20°C. Avoid freeze / thaw cycles.

## Background

RFFL (Ring Finger And FYVE Like Domain Containing E3 Ubiquitin Protein Ligase) is a Protein Coding gene. Diseases associated with RFFL include Noonan Syndrome 1. Among its related pathways are Gene Expression and Regulation of TP53 Expression and Degradation. Gene Ontology (GO) annotations related to this gene include protein kinase binding and ubiquitin protein ligase binding. An important paralog of this gene is ENSG00000267618.

## For Research Use Only

A Reliable Research Partner in Life Science and Medicine

Toll-free: 1-888-852-8623

Web: [www.elabscience.com](http://www.elabscience.com)

Tel: 1-832-243-6086

Email: [techsupport@elabscience.com](mailto:techsupport@elabscience.com)

Fax: 1-832-243-6017