

Anti-Human CD3 Monoclonal Antibody (PE/Cy7 Conjugated)

| | | | |
|--------------------|--------------------------------------------|---------------------|-------|
| Catalog No. | E-AB-1637 | Reactivity | Human |
| Storage | Store at 2~8°C, Avoid freeze / thaw cycles | Applications | FCM |

Important Note: Centrifuge before opening to ensure complete recovery of vial contents.

Antigen Information

| | |
|------------------------|--------------------------------------------------------------------------------------------------------------------------------------------------------------------------------------------------------------------------------------------------------------------------------------------------------------------------------------------------------------------------------------------------------------------------------------------------------------------------------------------------------------------------------------------------------------------------------------------------------------------------------------------------------------------------------------------------------------------------------------------------------------------------------------------------------------------------------------------------------------------------------------------------------------------------------------------------------------------------------------------------------------------------------------------------------------------------------------------------------------------------------------------------------------------------------------------------------------------------------------------------------------------------------------------------------------------------------------------------------------------------------------------------------------------------------------------------------------------------------------------------------------------------------------------------------------------------------------------------------------------------------------------------------------------------------------------------------------------------------------------------------------------------------------------------------------------------------------------------------|
| Alternate Names | 4930549J05Rik,A430104F18Rik,AW552088,Cd247,CD247 antigen,CD247 antigen,zeta subunit,CD247 molecule,CD3,CD3 antigen,delta subunit,CD3 delta,CD3 epsilon,CD3 eta,CD3 gamma,CD3 molecule delta polypeptide,CD3 molecule,epsilon polypeptide,CD3 molecule,gamma polypeptide,CD3 zeta,CD3-DELTA,CD3d,CD3D antigen delta polypeptide,CD3d antigen,delta polypeptide (TiT3 complex),CD3d molecule delta,CD3d molecule delta CD3 TCR complex,CD3d molecule,delta (CD3-TCR complex),CD3E,CD3e antigen,CD3E antigen epsilon polypeptide,CD3e antigen,epsilon polypeptide (TiT3 complex),CD3e molecule epsilon,CD3e molecule epsilon CD3 TCR complex,CD3e molecule,epsilon (CD3-TCR complex),CD3epsilon,CD3G,CD3g antigen,CD3G antigen gamma polypeptide,CD3g antigen,gamma polypeptide (TiT3 complex),CD3g molecule gamma,CD3g molecule gamma CD3 TCR complex,CD3g molecule,gamma (CD3-TCR complex),CD3H,CD3Q ,CD3Z,CD3zeta,Ctg3,FLJ17620,FLJ17664,FLJ18683,FLJ79544,FLJ94613,IMD19,Leu-4,MGC 138597,OKT3,delta chain,OTTHUMP00000032544,T cell receptor,T cell receptor T3 delta chain,T cell receptor T3 gamma chain,T cell receptor T3 zeta chain,T cell receptor zeta chain,T cell surface glycoprotein CD3,T cell surface glycoprotein CD3 delta chain,T cell surface glycoprotein CD3 epsilon chain,T cell surface glycoprotein CD3 gamma chain,T cell surface glycoprotein CD3 zeta chain,T-cell antigen receptor complex,delta subunit of T3,T-cell antigen receptor complex,epsilon subunit of T3,T-cell antigen receptor complex,gamma subunit of T3,T-cell antigen receptor complex,zeta subunit of CD3,T-cell receptor T3 delta chain,T-cell receptor T3 gamma chain,T-cell surface antigen T3/Leu-4 epsilon chain,T-cell surface glycoprotein CD3 delta chain,T-cell surface glycoprotein CD3 gamma chain,T3,T3d,T3e,T3g,T3z,TCRE,TCRk,Tcrz,TCRzeta |
| Uniprot ID | P04234,P07766,P09693 |

Background CD3ε is a 20 kD chain of the CD3/T-cell receptor (TCR) complex which is composed of two CD3ε, one CD3γ, one CD3δ, one CD3ζ (CD247), and a T-cell receptor (α/β or γ/δ) heterodimer. It is found on all mature T lymphocytes, NK-T cells, and some thymocytes. CD3, also known as T3, is a member of the immunoglobulin superfamily that plays a role in antigen recognition, signal transduction, and T cell activation. The OKT3 antibody is able to induce T cell activation.

Product Details

| | |
|--------------------------------|----------------------------------------------------------------------------------------------------------------|
| Size | 100tests/25tests |
| Clone No. | OKT-3 |
| Host | Mouse |
| Isotype | Mouse IgG2a |
| Reactivity | Human |
| Application | FCM |
| Storage Buffer | PBS with 0.09% NaN ₃ , 0.2% BSA, PH7.2 |
| Shipping | Biological ice pack at 4 °C |
| Stability & Storage | Keep as concentrated solution. Store at 2~8°C and protected from prolonged exposure to light.Do not freeze. |

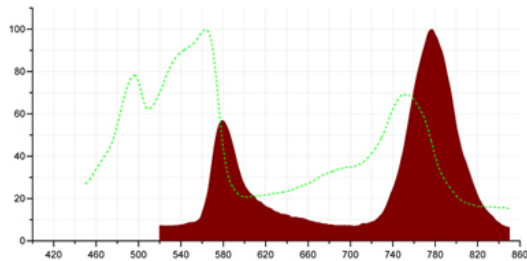
For Research Use Only

This product is guaranteed up to one year from purchase.

Fluorophore

Conjugation: PE/Cy7

Excitation Laser:



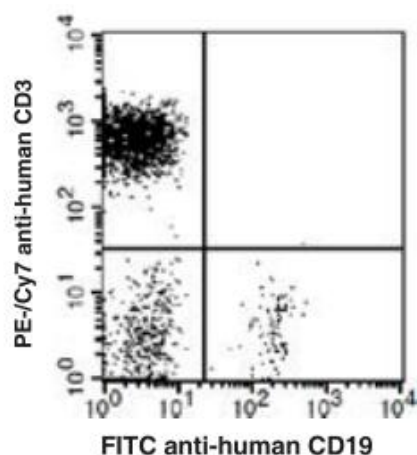
Fluorochrome : PE/Cy7
Excitation Source: Blue 488 nm
Excitation Max: 496 nm
Emission Max: 785 nm

PE/Cy7 is a tandem fluorochrome that combines PE and a cyanine dye. PE/Cy7 conjugated reagents are as bright as PE conjugates. PE/Cy7 is particularly sensitive to photo-induced degradation, resulting in loss of fluorescence and changes in fluorescence spillover. Extreme caution must be taken to avoid light exposure and prolonged exposure to paraformaldehyde fixative. Fixed cells should be analyzed within 4 hours of fixation in paraformaldehyde or transferred to a paraformaldehyde-free buffer for overnight storage.

Recommended usage

Each lot of this antibody is quality control tested by immunofluorescent staining with flow cytometric analysis (The amount of the reagent is suggested to be used from 20 μ L to 5 μ L per 100 μ L of peripheral blood or 10^6 cells in 100 μ L. Please check your vial). Since applications vary, the appropriate dilutions must be determined for individual use.

Product data



Human peripheral blood lymphocytes stained with FITC anti-human CD19 and PE/Cy7 anti-human CD3.

Related Information

For Research Use Only

1. Sample Preparation for Flow Cytometry <https://www.elabscience.com/List-detail-5594.html>
2. Staining Intracellular Antigens for Flow Cytometry <https://www.elabscience.com/List-detail-5570.html>
3. Flow Cytometry Troubleshooting Tips <https://www.elabscience.com/List-detail-5593.html>
4. How to select the appropriate detection channel through the spectrogram? <https://www.elabscience.com/List-detail-459742.html>