

## Anti-Mouse FOXP3 Monoclonal Antibody (PE conjugated)

<b>Catalog No.</b>	E-AB-2292	<b>Reactivity</b>	Mouse
<b>Storage</b>	Store at 2~8°C, Avoid freeze / thaw cycles	<b>Applications</b>	FCM

**Important Note:** Centrifuge before opening to ensure complete recovery of vial contents.

### Antigen Information

<b>Alternate Names</b>	AIID,DIETER,Forkhead box P3,Forkhead box protein P3,FOXP3,FOXP3,FOXP3delta7,Immune dysregulation polyendocrinopathy enteropathy X linked,Immunodeficiency polyendocrinopathy enteropathy X linked,IPEX,JM2,MGC141961,MGC141963,OTTHUMP00000025832,OTTHUMP00000025833,OTTHUMP00000226737,PIDX,Scurfin,XPID
<b>Uniprot ID</b>	Q99JB6
<b>Background</b>	FOXP3 is a 50-55 kD transcription factor, also known as Forkhead box protein P3, Scurfin, JM2, or IPEX. It is proposed to be a master regulatory gene and more specific marker of T regulatory cells than most cell surface markers (such as CD4 and CD25). Transduced expression of FOXP3 in CD4+/CD25- cells has been shown to induce GITR, CD103, and CTLA4 and impart a T regulatory cell phenotype. FOXP3 is mutated in X-linked autoimmunity-allergic dysregulation syndrome (XLAAD or IPEX) in humans and in "scurfy" mice. Overexpression of FOXP3 has been shown to lead to a hypoactive immune state suggesting that this transcriptional factor is a central regulator of T cell activity. In human, unlike in mouse, two isoforms of FOXP3 have been reported: one (FOXP3) corresponding to the canonical full-length sequence; the other (FOXP3 δ2) lacking exon 2. The 150D monoclonal antibody reacts with human, mouse and rat FOXP3. The 150D antibody recognizes FOXP3 epitope encoded by exon 2.

### Product Details

<b>Size</b>	25µg/100µg
<b>Clone No.</b>	MF-23
<b>Host</b>	Rat
<b>Isotype</b>	Rat IgG2b
<b>Reactivity</b>	Mouse
<b>Application</b>	FCM
<b>Storage Buffer</b>	PBS with 0.09% NaN <sub>3</sub> , 0.2% BSA, PH7.2
<b>Shipping</b>	Biological ice pack at 4 °C
<b>Stability &amp; Storage</b>	Keep as concentrated solution. Store at 2~8°C and protected from prolonged exposure to light.Do not freeze. This product is guaranteed up to one year from purchase.

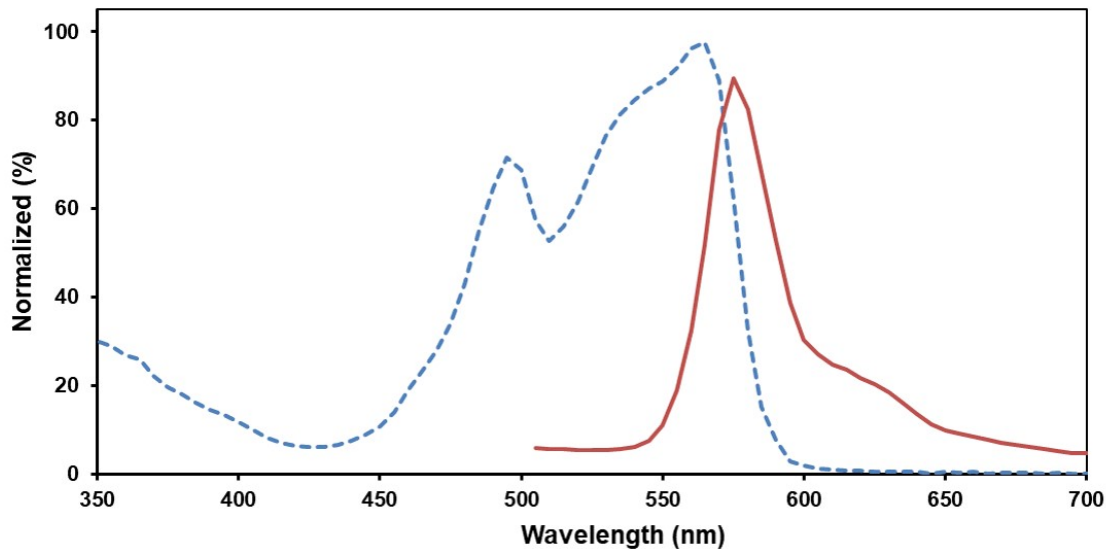
### For Research Use Only

## Fluorophore

Conjugation: PE

Excitation Laser:

### PE Excitation and Emission Spectra



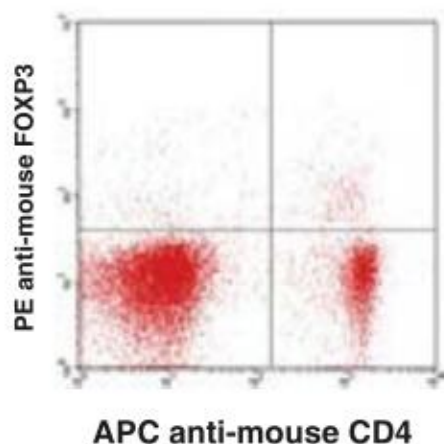
**Ex:495;565 nm; Em:575 nm**

Phycoerythrin (PE) is a red protein-pigment complex from the light-harvesting phycobiliprotein family, present in red algae and cryptophytes, accessory to the main chlorophyll pigments responsible for photosynthesis. It is a 240-KDa protein.

## Recommended usage

Each lot of this antibody is quality control tested by immunofluorescent staining with flow cytometric analysis (The amount of the reagent is suggested to be used  $\leq 1.0 \mu\text{g} / 10^6$  cells in  $100 \mu\text{l}$ ). Since applications vary, the appropriate dilutions must be determined for individual use.

## Product data



C57BL/6 splenocytes surface stained with APC anti-mouse CD4 and PE anti-mouse FOXP3.

## Related Information

1. Sample Preparation for Flow Cytometry <https://www.elabscience.com/List-detail-5594.html>
2. Staining Intracellular Antigens for Flow Cytometry <https://www.elabscience.com/List-detail-5570.html>
3. Flow Cytometry Troubleshooting Tips <https://www.elabscience.com/List-detail-5593.html>
4. How to select the appropriate detection channel through the spectrogram? <https://www.elabscience.com/List-detail-459742.html>