

## alpha Tubulin Polyclonal Antibody

**Catalog No.** E-AB-12143

*Note:* Centrifuge before opening to ensure complete recovery of vial contents.

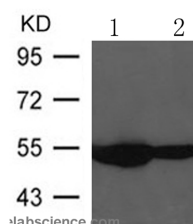
### Description

<b>Reactivity</b>	Human,Mouse,Rat
<b>Immunogen</b>	Synthetic peptide of human TUBA1B
<b>Host</b>	Rabbit
<b>Isotype</b>	IgG
<b>Purification</b>	Affinity purification
<b>Conjugation</b>	Unconjugated
<b>Buffer</b>	PBS with 0.05% sodium azide, 50% glycerol, PH7.3

### Applications Recommended Dilution

**WB 1:500-1:1000**

### Data



Western Blot analysis of HeLa and HT29 cells using alpha Tubulin Polyclonal Antibody at dilution of 1:500

**Observed Mw:Refer to figures**

**Calculated Mw:50kDa**

### Preparation & Storage

**Storage** Store at -20°C. Avoid freeze / thaw cycles.

### Background

Tubulin is the major constituent of microtubules. It binds two moles of GTP, one at an exchangeable site on the beta chain and one at a non-exchangeable site on the alpha chain.

### For Research Use Only