

PCNA Polyclonal Antibody

Catalog Number:E-AB-10010

1 Publications



Note: Centrifuge before opening to ensure complete recovery of vial contents.

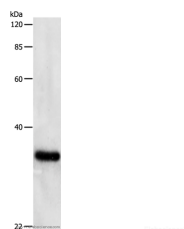
Description

Reactivity	Human ,Mouse ,Rat
Immunogen	Recombinant protein of human PCNA
Host	Rabbit
Isotype	IgG
Purification	Affinity purification
Conjugation	Unconjugated
Formulation	PBS with 0.05% sodium azide and 50% glycerol, PH7.4

Applications Recommended Dilution

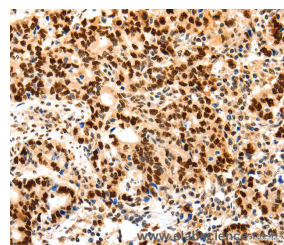
WB	1:500-1:2000
IHC	1:50-1:200

Data

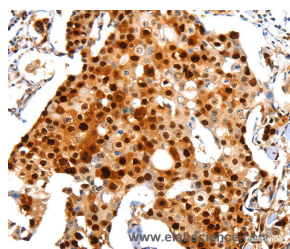


Western Blot analysis of Hela cell using Proliferating Cell Nuclear Antigen Polyclonal Antibody at dilution of 1:500

Observed Mw:Refer to figures
Calculated Mw:29kDa



Immunohistochemistry of paraffin-embedded Human gastric cancer using Proliferating Cell Nuclear Antigen Polyclonal Antibody at dilution of 1:44



Immunohistochemistry of paraffin-embedded Human breast cancer using Proliferating Cell Nuclear Antigen Polyclonal Antibody at dilution of 1:44

Preparation & Storage

Storage Store at -20°C. Avoid freeze / thaw cycles.

Background

This protein is an auxiliary protein of DNA polymerase delta and is involved in the control of eukaryotic DNA replication by increasing the polymerase's processibility during elongation of the leading strand. Induces a robust stimulatory effect

For Research Use Only

A Reliable Research Partner in Life Science and Medicine

Toll-free: 1-888-852-8623

Web: www.elabscience.com

Tel: 1-832-243-6086

Email: techsupport@elabscience.com

Fax: 1-832-243-6017

PCNA Polyclonal Antibody

Catalog Number: E-AB-10010

1 Publications



on the 3'-5' exonuclease and 3'-phosphodiesterase, but not apurinic-apyrimidinic (AP) endonuclease, APEX2 activities. Has to be loaded onto DNA in order to be able to stimulate APEX2.

For Research Use Only

A Reliable Research Partner in Life Science and Medicine

Toll-free: 1-888-852-8623

Web: www.elabscience.com

Tel: 1-832-243-6086

Email: techsupport@elabscience.com

Fax: 1-832-243-6017